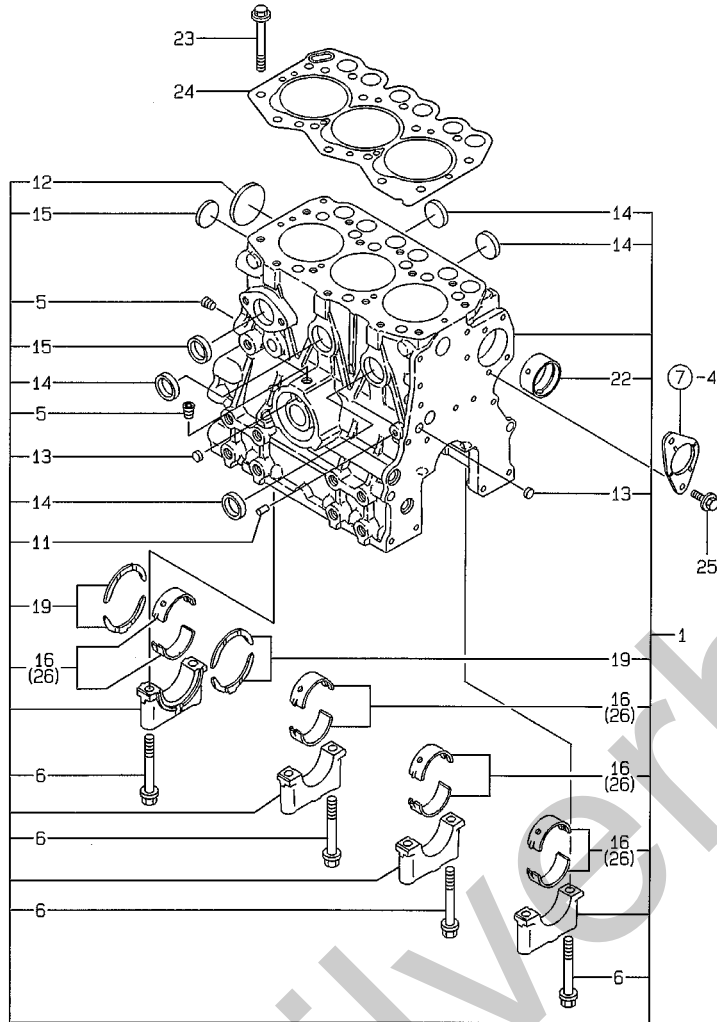


Fig.1. CYLINDER BLOCK

OCR10-G45101 1. CYLINDER BLOCK

(A)=3TNE68-SA  
(B)=3TNE68-G1A  
(C)=3TNE68-G2A

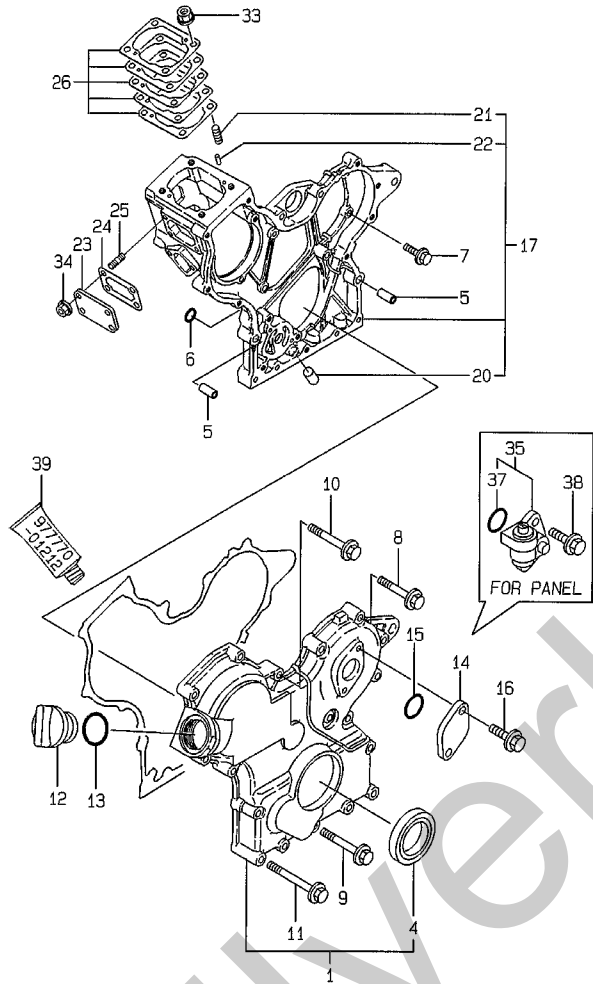
(D)=3TNE68C-SA  
(E)=3TNE68C-G1A  
(F)=



REF.	LEV.	PARTS NO.	DESCRIPTION	QTY						I	R
				(A)	(B)	(C)	(D)	(E)	(F)		
1	1	719265-01560	BLOCK ASSY, CYLINDER	1	1	1	1	1			
5	2	124060-01050	PLUG PT1/8	2	2	2	2	2			
6	2	119260-02020	BOLT	8	8	8	8	8			
11	2	27221-060100	PLUG 6X10	1	1	1	1	1			
12	2	27231-400000	PLUG 40	1	1	1	1	1			
I 12-1	2	119265-01250	PLUG 40	1	1	1	1	1			N
		(A=EXXX) (B=EXXX) (C=EXXX) (D=EXXX) (E=EXXX)									
13	2	27241-100000	PLUG 10	2	2	2	2	2			
14	2	27241-250000	PLUG 25	4	4	4	4	4			
15	2	27241-300000	PLUG 30	2	2	2	2	2			
16	2	119260-02800	MAIN BEARING	4	4	4	4	4			
19	2	119260-02930	THRUST BEARING	2	2	2	2	2			
22	2	119260-02410	BUSH, CAMSHAFT	1	1	1	1	1			
I 22-1	2	119266-02410	BUSH	1	1	1	1	1			R
		(A=E27953) (B=E28743) (C=E27414) (D=E00510) (E=E00590)									
23	1	119260-01200	BOLT, CYL.HEAD	14	14	14	14	14			
I 23-1	1	119266-01200	STUD, CYL. HEAD	14	14	14	14	14			N
		(A=E41889) (B=E43760) (C=E41816) (D=E00895) (E=E01001)									
24	1	119265-01340	GASKET, CYL. HEAD	1	1	1	1	1			
I 24-1	1	119265-01341	GASKET, CYL. HEAD	1	1	1	1	1			N
		(A=E21604) (B=E28743) (C=E23781) (D=E00493) (E=E00492)									
25	1	26106-060122	BOLT M 6X 12 PLATED	2	2	2	2	2			
26	1	719260-02870	MAIN BEARING US=0.25	4	4	4	4	4			1

Remarks  
(1) UNDER-SIZE(U.S=0.25)PART.

Fig.2. GEAR HOUSING



(A)=3TNE68-SA  
(B)=3TNE68-G1A  
(C)=3TNE68-G2A

(D)=3TNE68C-SA  
(E)=3TNE68C-G1A  
(F)=

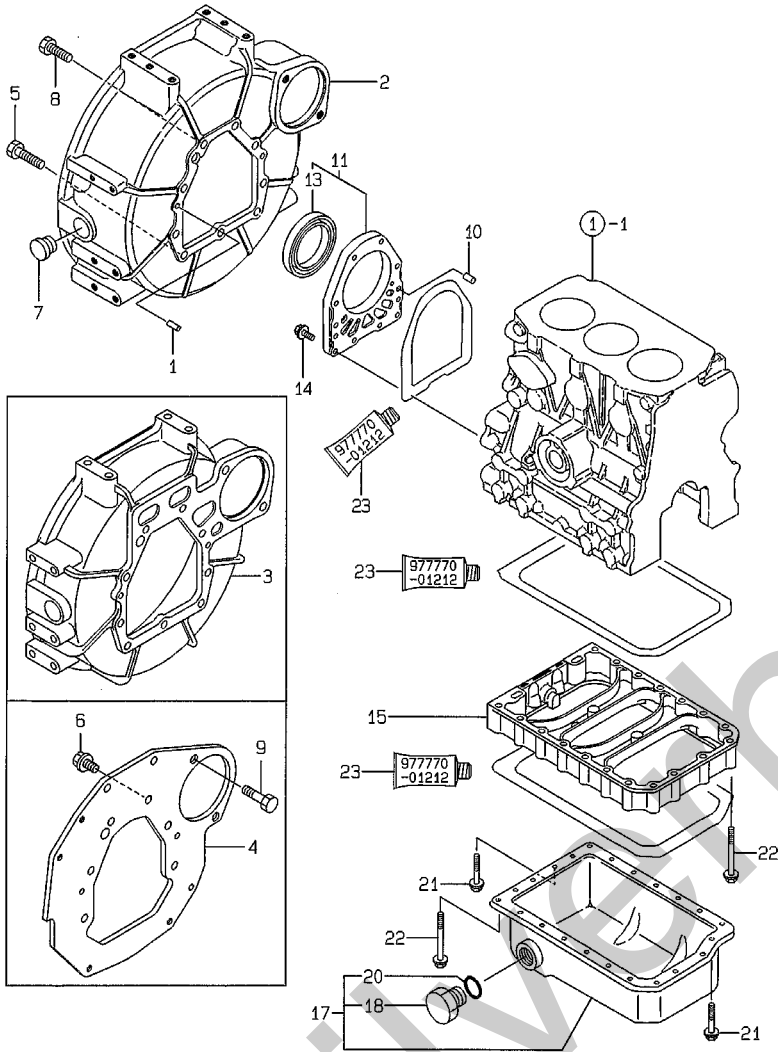
REF.	LEV.	PARTS NO.	DESCRIPTION	QTY						I	R
				(A)	(B)	(C)	(D)	(E)	(F)		
1	1	119260-01590	COVER ASSY, GEAR CASE	1	1	1	1	1			
4	2	119620-01800	SEAL HTC456208, OIL	1	1	1	1	1			
5	1	119660-01911	PIPE, KNOCK	4	4	4	4	4			
6	1	24311-000120	O-RING 1A P 12.0	2	2	2	2	2			
I 6-1	1	119624-32040	O-RING P 12.0	2	2	2				N	
		(A=E62542) (B=E62973) (C=E62473)									
7	1	26106-060162	BOLT M 6X 16 PLATED	5	5	5	5	5			
8	1	26106-060302	BOLT M 6X 30 PLATED	5	5	5	5	5			
9	1	26106-060402	BOLT M 6X 40 PLATED	3	3	3	3	3			
10	1	26106-060502	BOLT M 6X 50 PLATED	4	4	4	4	4			
11	1	26106-060652	BOLT M 6X 65 PLATED	6	6	6	6	6			
12	1	124160-01751	COVER, FILLER	1	1	1	1	1			
13	1	24311-000320	O-RING 1A P-32.0	1	1	1	1	1			
14	1	121023-01550	COVER, BLIND	1	1	1	1	1			
15	1	24341-000240	O-RING 1A S-24.0	1	1	1	1	1			
16	1	26106-060182	BOLT M 6X 18 PLATED	2	2	2	2	2			
I 16-1	1	26106-060162	BOLT M 6X 16 PLATED	2	2	2	2	2		N	
		(A=E6XXX) (B=E6XXX) (C=E6XXX) (D=E6XXX) (E=E6XXX)									
17	1	119260-01490	HOUSING ASSY, GEAR	1	1	1	1	1			
20	2	119260-01510	PLUG	1	1	1	1	1			
21	2	121450-01560	STUD M 8X 22	4	4	4	4	4			
22	2	22351-040010	SPRING PIN 4X10	2	2	2	2	2			
23	1	119660-01551	COVER	1	1	1	1	1			
24	1	119660-01562	GASKET, (NON-ASB.)	1	1	1	1	1			
25	1	119660-01570	STUD M6X12	4	4	4	4	4			
26	1	119623-01950	SHIM PACK	1	1	1	1	1			
33	1	194990-22050	NUT W/WASHER 8	4	4	4	4	4			
34	1	26366-060002	NUT M 6	4	4	4	4	4			
35	1	129150-91400	GEAR UNIT, TACHOMETER	1	1	1	1	1		1	
37	2	24341-000240	O-RING 1A S-24.0	1	1	1	1	1		1	
38	1	26106-060162	BOLT M 6X 16 PLATED	2	2	2	2	2		1	
I 39	1	977770-01212	GASKET, LIQUID	1	1	1	1	1		W 2	
		(A=E6XXX) (B=E6XXX) (C=E6XXX) (D=E6XXX) (E=E6XXX)									

Remarks  
(1) FOR PANEL.  
(2) OPTIONAL PART.

Fig.3. FLYWHEEL HOUSING & OIL SUMP

(A)=3TNE68-SA  
(B)=3TNE68-G1A  
(C)=3TNE68-G2A

(D)=3TNE68C-SA  
(E)=3TNE68C-G1A  
(F)=



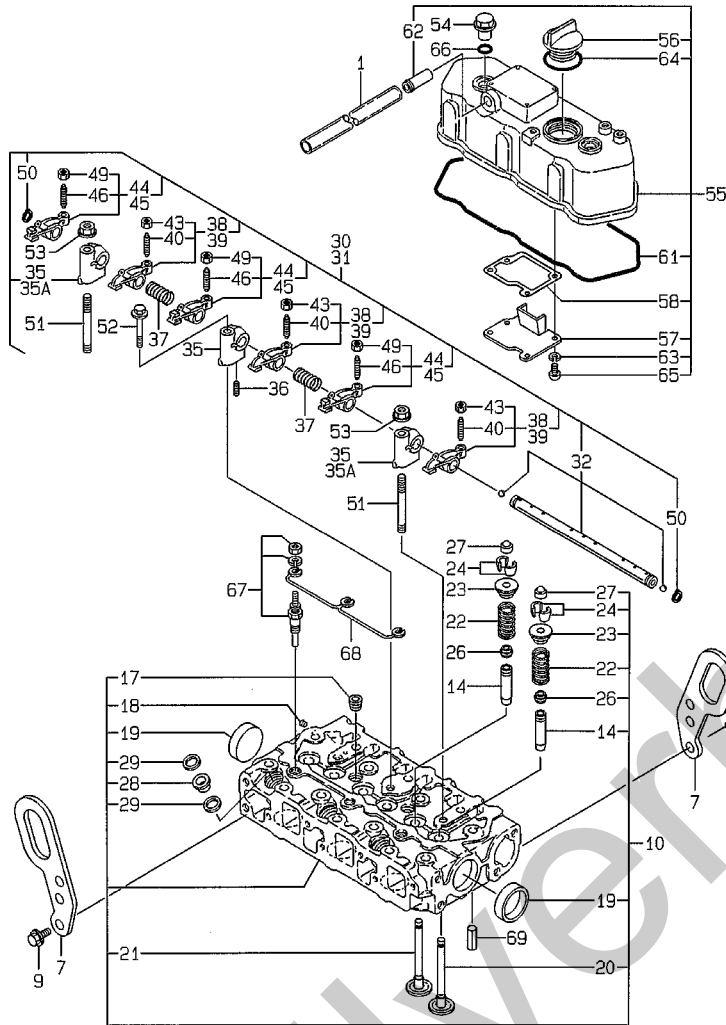
REF.	LEV.	PARTS NO.	DESCRIPTION	QTY						I	R
				(A)	(B)	(C)	(D)	(E)	(F)		
1	1	129100-01580	PARALLEL PIN 8X16	2	2	2	2	2			
2	1	119280-01600	FLANGE, MOUNTING	1	1	1	1	1			
3	1	119600-01600	HOUSING, FLYWHEEL	1		1	1				
4	1	119621-01611	REAR PLATE	1		1	1				
5	1	121120-01620	BOLT M 10X 28	3	3	3	3	3			
6	1	26116-100202	BOLT M10X 20 PLATED	8		8	8				
7	1	119620-01750	CAP, FLYWHEEL COVER	1	1	1	1	1			
8	1	26206-100252	BOLT M10X25	6	6	6	6	6			
9	1	119620-01621	STUD, STARTER	2		2	2				
10	1	119620-01620	PARALLEL PIN 6X10	2	2	2	2	2			
11	1	119660-01640	CASE ASSY, OIL SEAL	1	1	1	1	1			
13	2	124085-02220	SEAL, OIL	1	1	1	1	1			
14	1	26106-060222	BOLT M 6X 22 PLATED	10	10	10	10	10			
15	1	119454-01721	SPACER, OIL SUMP	1	1	1	1	1			
17	1	119260-01770	SUMP ASSY, OIL	1	1	1	1	1			
18	2	121400-01640	PLUG M16	1	1	1	1	1			
20	2	24311-000180	O-RING 1A P-18.0	1	1	1	1	1			
21	1	26106-060102	BOLT M 6X 10 PLATED	3	3	3	3	3			
22	1	26106-060452	BOLT M 6X 45 PLATED	20	20	20	20	20			
23	1	977770-01212	GASKET, LIQUID	1	1	1	1	1		W 1	
		(A=EXXX)	(B=EXXX)	(C=EXXX)	(D=EXXX)	(E=EXXX)					

Remarks  
(1) OPTIONAL PART.

Fig.4. CYLINDER HEAD & BONNET

(A)=3TNE68-SA  
(B)=3TNE68-G1A  
(C)=3TNE68-G2A

(D)=3TNE68C-SA  
(E)=3TNE68C-G1A  
(F)=



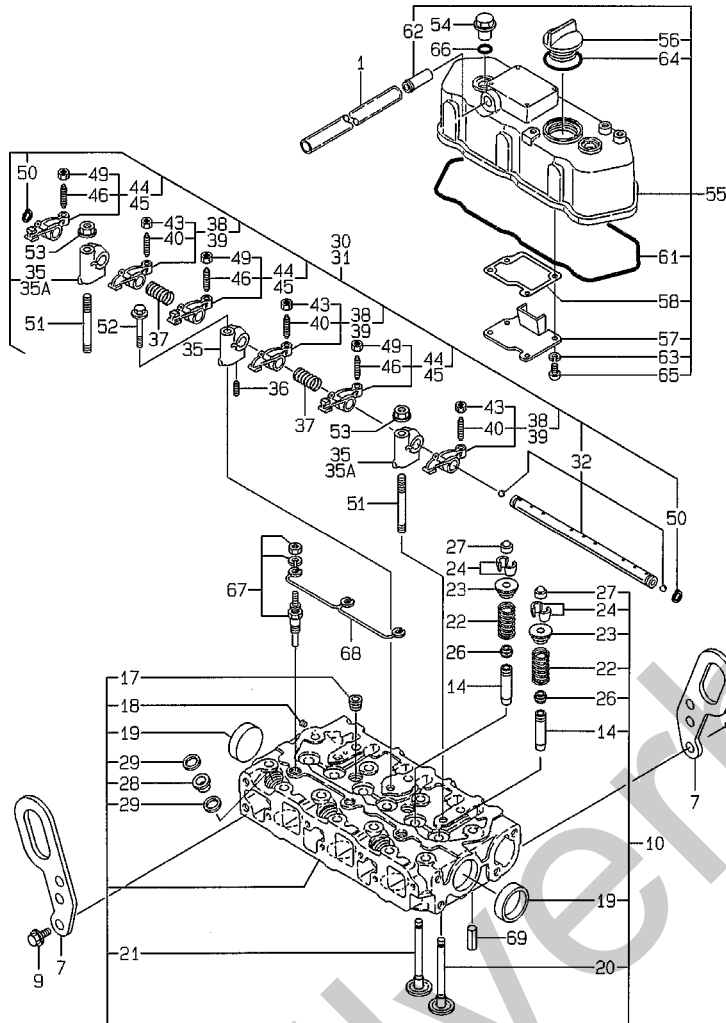
REF.	LEV.	PARTS NO.	DESCRIPTION	QTY						I	R
				(A)	(B)	(C)	(D)	(E)	(F)		
1	1	23065-120500	PIPE, VINYL 12X 500	1	1	1	1	1			
7	1	119260-07900	LIFTER, ENGINE	2	2	2	2	2			
8	1	26106-080142	BOLT M 8X 14 PLATED	1	1	1	1	1			
9	1	26106-080142	BOLT M 8X 14 PLATED	2	2	2	2	2			
10	1	119265-11700	HEAD ASSY, CYLINDER	1	1	1	1	1			
14	2	119260-11800	GUIDE, VALVE	6	6	6	6	6		1	
17	2	23871-020000	PLUG PT1/4,SCREW	2	2	2	2	2			
I 17-1	2	23871-030000 (A=E15864) (B=E15735) (C=E23781)	PLUG PT3/8,SCREW (D=E15864) (E=E15735)	2	2	2	2	2		S	
I 17-2	2	23876-030000 (A=E15864) (B=E15735) (C=E23781)	PLUG PT3/8,SCREW (D=E15864) (E=E15735)	2	2	2	2	2		N	
18	2	27221-050080	PLUG 5X 8	1	1	1	1	1			
19	2	27241-350000	PLUG 35	2	2	2	2	2			
20	2	119260-11100	VALVE, SUCTION	3	3	3	3	3			
21	2	119260-11110	VALVE, EXHAUST	3	3	3	3	3			
22	2	114250-11120	SPRING, VALVE	6	6	6	6	6			
23	2	114250-11180	RETAINER, SPRING	6	6	6	6	6			
24	2	714250-11570	COTTER ASSY	6	6	6	6	6			
26	2	119260-11340	SEAL, VALVE STEM	6	6	6	6	6			
27	2	119260-11370	CAP, VALVE	6	6	6	6	6			
28	2	119600-11450	PROTECTOR, NOZZLE	3	3	3	3	3			
29	2	119600-11460	GASKET, NOZZLE	6	6	6	6	6			
30	1	119260-11200	SUPPORT ASSY, ARM	1	1	1					
31	1	119489-11200	SUPPORT ASSY, ARM		1			1			
32	2	119260-11240	SHAFT ASSY, ARM	1	1	1	1	1			
35	2	119260-11260	SUPPORT, ROCKER ARM	3	3	3					
I 35-1	2	119260-11260 (A=E15864) (B=E15735) (C=E23781)	SUPPORT, ROCKER ARM (D=E15864) (E=E15735)	1	1	1	1	1		K	
I 35A	2	119265-11260 (A=E15864) (B=E15735) (C=E23781)	SUPPORT, ROCKER ARM (D=E15864) (E=E15735)	2	2	2	2	2		W	
36	2	119260-11270	SCREW	1	1	1	1	1			
37	2	119260-11280	SPRING	2	2	2	2	2			
38	2	719260-11650	ARM ASSY, ROCKER	3	3	3					
39	2	719489-11650	ARM ASSY, ROCKER		3			3			
40	3	105010-11230	SCREW, VALVE	3	3	3	3	3			
43	3	26756-060002	LOCK NUT 6	3	3	3	3	3			
44	2	719260-11660	ARM ASSY, ROCKER	3		3	3				
45	2	719489-11660	ARM ASSY, ROCKER		3			3			
46	3	105010-11230	SCREW, VALVE	3	3	3	3	3			
49	3	26756-060002	LOCK NUT 6	3	3	3	3	3			
50	2	22242-000100	CIRCLIP 10	2	2	2	2	2			
51	1	119620-11350	STUD	2	2	2	2	2			
52	1	26106-080452	BOLT M 8X 45 PLATED	1	1	1	1	1			
53	1	26366-080002	NUT M 8	2	2	2	2	2			
I 53-1	1	26306-080002	NUT	2	2	2	2	2		N	
			(A=E15864) (B=E15735) (C=E23781) (D=E15864) (E=E15735)								
54	1	124160-11360	KNOB	2	2	2	2	2			
55	1	119260-11330	BONNET ASSY,(NON-ASB)	1	1	1	1	1			
56	2	124160-01751	COVER,FILLER	1	1	1	1	1			
57	2	119260-03020	PLATE, SHELTER	1	1	1	1	1			
58	2	119260-03031	GASKET, (NON-ASB.)	1	1	1	1	1			

Remarks  
(1) REPAIR PART.

Fig.4. CYLINDER HEAD & BONNET

(A)=3TNE68-SA  
(B)=3TNE68-G1A  
(C)=3TNE68-G2A

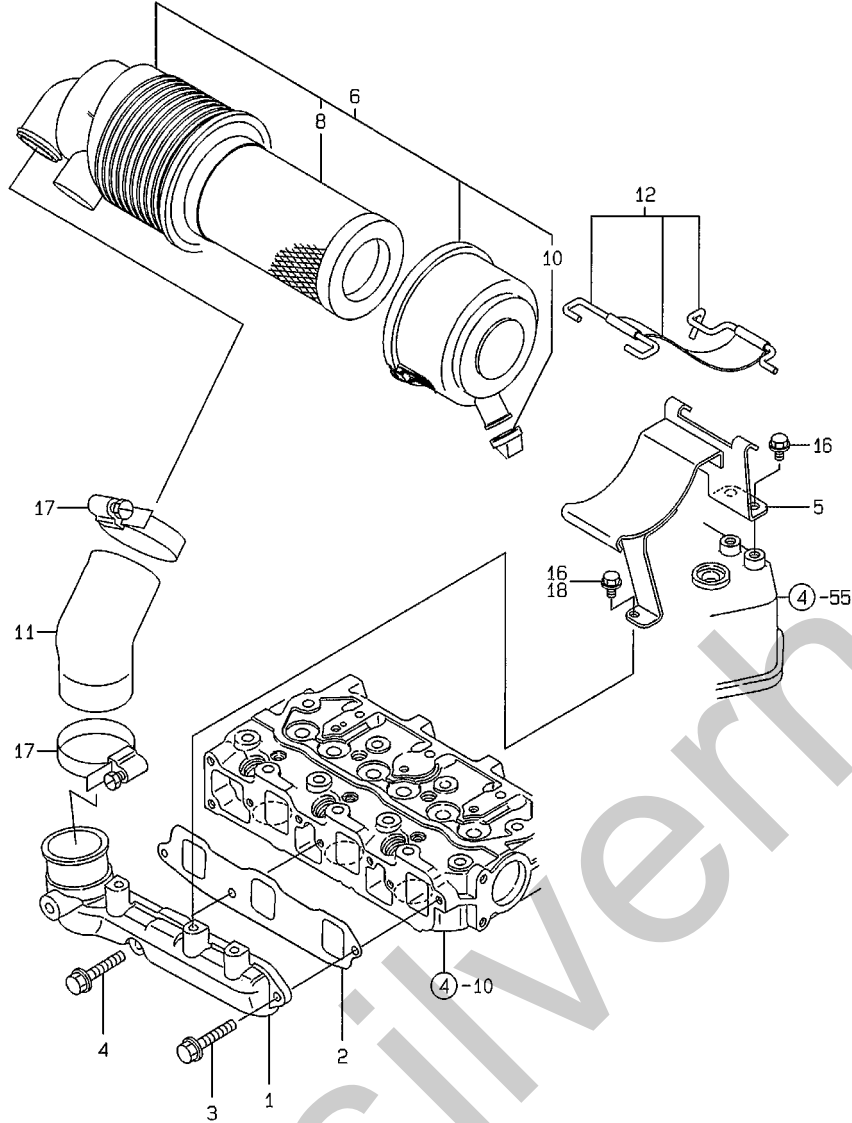
(D)=3TNE68C-SA  
(E)=3TNE68C-G1A  
(F)=



REF.	LEV.	PARTS NO.	DESCRIPTION	Q'TY						I	R
				(A)	(B)	(C)	(D)	(E)	(F)		
61	2	119260-11310	GASKET, BONNET	1	1	1	1	1			
62	2	119620-11390	JOINT	1	1	1	1	1			
I 62-1	2	118400-03060	JOINT, BREATHER	1	1	1	1	1		R	
I 63	2	(A=E43090) (B=E43760) (C=E43089) (D=E00999) (E=E01001)	SPRING WASHER 5	4	4	4	4	4		Z	
		(A=E33947) (B=E36957) (C=E33946) (D=E00605) (E=E00590)									
64	2	24311-000320	O-RING 1A P-32.0	1	1	1	1	1			
65	2	26557-050102	SCREW M 5X 10	4	4	4	4	4			
I 65-1	2	22857-500100	SCREW 5X10,TAPPING	4	4	4	4	4		R	
66	1	(A=E33947) (B=E36957) (C=E33946) (D=E00605) (E=E00590)	O-RING 1A P 12.0	2	2	2	2	2			
67	1	129795-77800	PLUG, GLOW	3	3	3	3	3			
68	1	119620-77820	CONNECTOR, GLOW PLUG	1	1	1	1	1			
69	1	22351-060012	SPRING PIN 6X12	2	2	2	2	2			

Remarks  
(1) REPAIR PART.

Fig.5. SUCTION MANIFOLD & AIR CLEANER



OCR10-G45101 5. SUCTION MANIFOLD & AIR CLEANER

(A)=3TNE68-SA  
(B)=3TNE68-G1A  
(C)=3TNE68-G2A

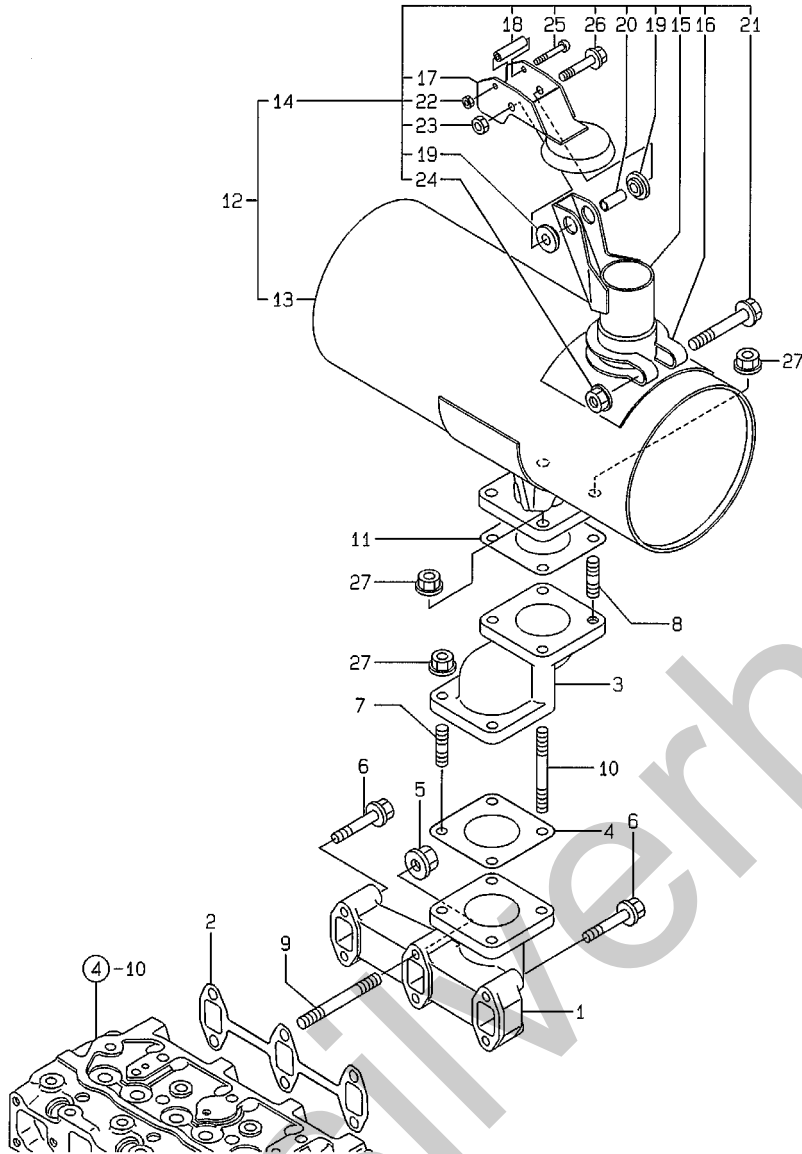
(D)=3TNE68C-SA  
(E)=3TNE68C-G1A  
(F)=

REF.	LEV.	PARTS NO.	DESCRIPTION	Q'TY						I	R
				(A)	(B)	(C)	(D)	(E)	(F)		
1	1	119270-12100	MANIFOLD, SUCTION	1	1	1	1	1			
2	1	119270-12110	GASKET, SUC.MANIFOLD	1	1	1	1	1			
3	1	26106-060162	BOLT M 6X 16 PLATED	2	2	2	2	2			
4	1	26106-060282	BOLT M 6X 28 PLATED	1	1	1	1	1			
5	1	119489-12600	SUPPORT,AIR CLEANER	1	1	1	1	1			
6	1	119653-12500	CLEANER ASSY, AIR	1	1	1	1	1			
8	2	119655-12560	ELEMENT	1	1	1	1	1			
10	2	119808-12540	VALVE, UNLOADER	1	1	1	1	1			
11	1	119462-12550	PIPE,SUCTION	1	1	1	1	1			
12	1	119865-12600	STAY	1	1	1	1	1			
16	1	26106-080122	BOLT M 8X 12 PLATED	3	3	3					
I 16-1	1	26106-080122	BOLT M 8X 12 PLATED	2	2	2	2	2		K	
I 17	1	(A=FROM 1ST) (A=EXXX)	(B=FROM 1ST) (B=EXXX)	(C=FROM 1ST) (C=EXXX)	2	2	2	2	2	W	
I 18	1	26106-060122	BOLT M 6X 12 PLATED	1	1	1	1	1	1	W	

Fig.6. EXHAUST MANIFOLD & SILENCER

(A)=3TNE68-SA  
(B)=3TNE68-G1A  
(C)=3TNE68-G2A

(D)=3TNE68C-SA  
(E)=3TNE68C-G1A  
(F)=

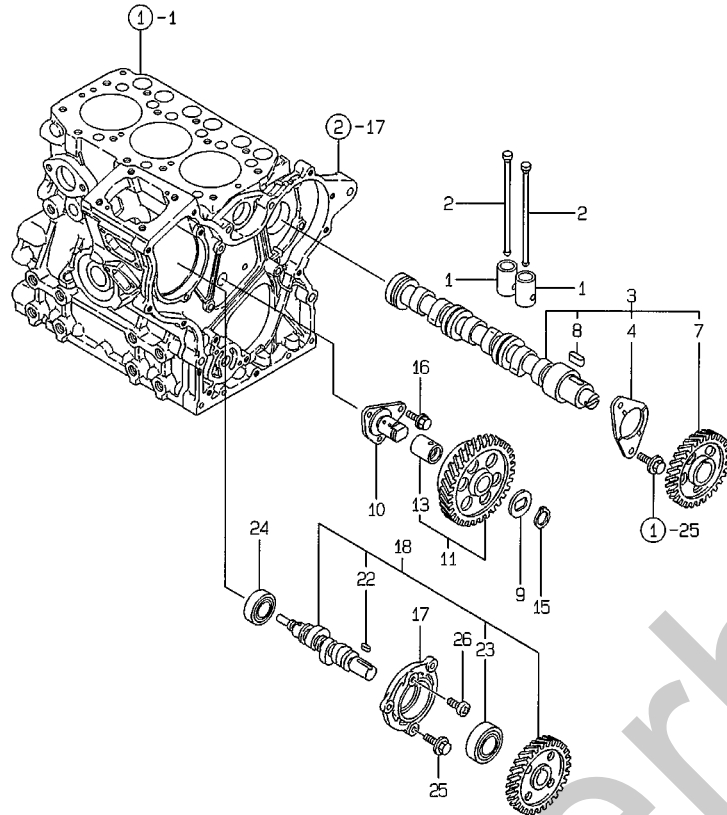


REF.	LEV.	PARTS NO.	DESCRIPTION	Q'TY						I	R
				(A)	(B)	(C)	(D)	(E)	(F)		
1	1	119253-13100	MANIFOLD, EXHAUST	1	1	1	1	1			
2	1	119260-13110	GASKET, EXH.MANIFOLD	1	1	1	1	1			
3	1	119840-13150	PIPE,EXHAUST	1	1	1	1	1			
4	1	121000-13201	GASKET, SILENCER	1	1	1	1	1			
I 5	1	26366-060002	NUT M 6	2	2	2	2	2			
I 6	1	26106-060402	BOLT M 6X 40 PLATED	4	4	4	4	4			
7	1	26216-080222	STUD M 8X 22 PLATED	2	2	2	2	2			
I 7-1	1	26216-080282	STUD M 8X 28 PLATED	2	2	2	2	2		N	
		(A=E44377) (B=E44756) (C=E44758) (D=E63367) (E=E01085)									
8	1	26216-080222	STUD M 8X 22 PLATED	2	2	2	2	2			
I 8-1	1	119131-18320	BOLT M 8X 22	2	2	2	2	2		N	
		(A=E38118) (B=E38573) (C=E38217) (D=E00792) (E=E00822)									
I 9	1	26216-060402	STUD M 6X 40 PLATED	2	2	2	2	2			
10	1	26216-080702	STUD M 8X 70 PLATED	2	2	2	2	2			
I 10-1	1	119823-13600	BOLT M8X70	2	2	2	2	2		N	
		(A=E41025) (B=E39656) (C=E39657) (D=E00804) (E=E00822)									
11	1	121000-13201	GASKET, SILENCER	1	1	1	1	1			
12	1	119620-13501	SILENCER	1	1	1	1	1			
13	2	119620-13510	MUFFLER BODY ASSY	1	1	1	1	1			
14	2	119620-13520	TAILPIPE ASSY	1	1	1	1	1			
15	3	119620-13560	TAILPIPE	1	1	1	1	1			
16	3	124664-13580	CLAMP	1	1	1	1	1			
17	3	119358-13640	RAINCAP,MUFFLER	1	1	1	1	1			
18	3	121855-13821	SPACER(A)	1	1	1	1	1			
19	3	121855-13830	SPACER(B)	2	2	2	2	2			
20	3	123500-13840	SPACER(C)	1	1	1	1	1			
21	3	26106-080552	BOLT M 8X 55 PLATED	1	1	1	1	1			
22	3	26347-040002	U-NUT M 4	1	1	1	1	1			
23	3	26347-060002	U NUT 6	1	1	1	1	1			
24	3	26366-080002	NUT M 8	1	1	1	1	1			
I 24-1	3	26306-080002	NUT	1	1	1	1	1		N	
		(A=EXXX) (B=EXXX) (C=EXXX) (D=EXXX) (E=EXXX)									
25	3	26557-040352	SCREW M 4X 35	1	1	1	1	1			
26	3	26106-060402	BOLT M 6X 40 PLATED	1	1	1	1	1			
27	1	194990-22050	NUT W/WASHER 8	6	6	6	6	6			
I 27-1	1	26306-080002	NUT	6	6	6	6	6		N	
		(A=EXXX) (B=EXXX) (C=EXXX) (D=EXXX) (E=EXXX)									

Fig.7. CAMSHAFT & DRIVING GEAR

(A)=3TNE68-SA  
(B)=3TNE68-G1A  
(C)=3TNE68-G2A

(D)=3TNE68C-SA  
(E)=3TNE68C-G1A  
(F)=



REF.	LEV.	PARTS NO.	DESCRIPTION	QTY						I	R
				(A)	(B)	(C)	(D)	(E)	(F)		
1	1	119260-14200	TAPPET	6	6	6	6	6			
2	1	119260-14400	ROD, PUSH	6	6	6	6	6			
3	1	119260-14580	CAMSHAFT ASSY	1	1	1	1	1			
4	2	119620-02450	BEARING, THRUST	1	1	1	1	1			
7	2	119260-14100	GEAR, CAMSHAFT	1	1	1	1	1			
8	2	22512-040120	KEY 4X 12	1	1	1	1	1			
9	1	119660-25022	RETAINER, IDLE GEAR	1	1	1	1	1			
10	1	119660-25052	SHAFT, IDLE GEAR	1	1	1	1	1			
11	1	119260-25100	GEAR W/BUSH, IDLE	1	1	1	1	1			
13	2	119620-25912	BUSH	1	1	1	1	1		1	
15	1	22242-000200	CIRCLIP 20	1	1	1	1	1			
16	1	26106-060122	BOLT M 6X 12 PLATED	3	3	3	3	3			
17	1	119660-01821	BEARING, FUEL CAM.	1	1	1	1	1			
18	1	119225-14200	CAM ASSY, F.I. PUMP	1	1	1	1	1			
22	2	22512-040120	KEY 4X 12	1	1	1	1	1			
23	2	24102-063034	BALL BEARING 6303U	1	1	1	1	1			
24	1	24101-062034	BALL BEARING	1	1	1	1	1			
25	1	26106-060162	BOLT M 6X 16 PLATED	3	3	3	3	3			
26	1	26587-080102	SCREW M 8X 10	1	1	1	1	1			

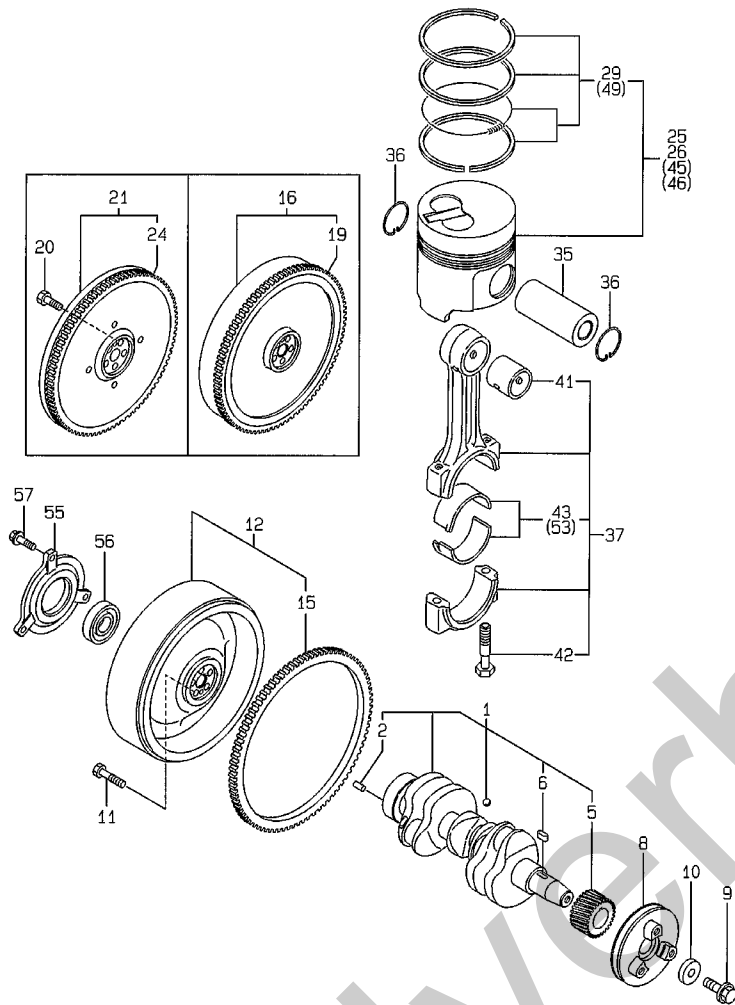
Remarks  
(1) REPAIR PART.



Fig.8. CRANKSHAFT & PISTON

(A)=3TNE68-SA  
(B)=3TNE68-G1A  
(C)=3TNE68-G2A

(D)=3TNE68C-SA  
(E)=3TNE68C-G1A  
(F)=



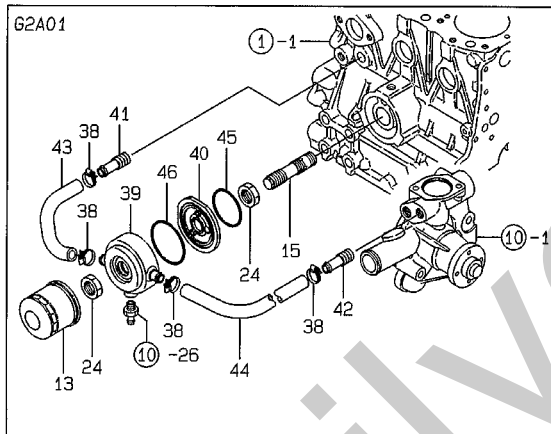
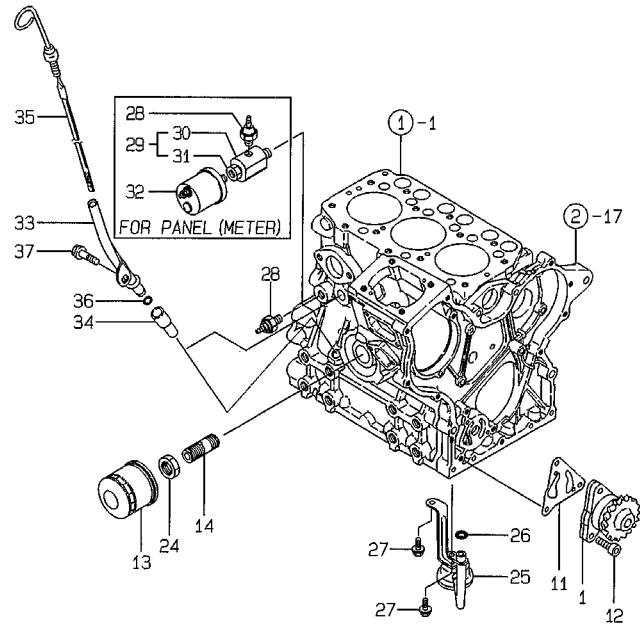
REF.	LEV.	PARTS NO.	DESCRIPTION	QTY						I	R
				(A)	(B)	(C)	(D)	(E)	(F)		
1	1	119265-21700	CRANKSHAFT ASSY	1	1	1	1	1			
2	2	129100-01580	PARALLEL PIN 8X16	1	1	1	1	1			
5	2	119260-21200	GEAR, CRANKSHAFT	1	1	1	1	1			
6	2	22512-040120	KEY 4X 12	1	1	1	1	1			
8	1	119260-21650	V-PULLEY	1	1	1	1	1			
9	1	119621-21680	BOLT M12X1.25,FLANGE	1	1	1	1	1			
10	1	119620-21941	WASHER	1	1	1	1	1			
11	1	121111-21501	BOLT, FLYWHEEL	5	5	5	5	5			
12	1	119688-21590	FLYWHEEL CMP	1	1	1	1	1			
15	2	119865-21600	GEAR, RING	1	1	1	1	1			
16	1	119600-21580	FLYWHEEL ASSY	1		1	1				
19	2	119865-21600	GEAR, RING	1		1	1				
20	1	119620-21500	BOLT, FLYWHEEL	5	5	5					
21	1	119620-21591	FLYWHEEL W/RING GEAR	1		1	1				
24	2	124060-21600	GEAR, RING	1		1	1				
25	1	119265-22601	PISTON W/RINGS	3	3		3	3			
26	1	119265-22090	PISTON W/RINGS			3					
29	2	119265-22500	RING SET	3	3	3	3	3			
35	1	119265-22300	PIN, PISTON	3	3	3	3	3			
36	1	22252-000200	CIRCLIP 20	6	6	6	6	6			
37	1	119265-23100	ROD ASSY, CONNECTING	3	3	3	3	3			
41	2	119260-23910	BUSH, PISTON PIN	3	3	3	3	3		1	
42	2	119265-23200	BOLT, ROD	6	6	6	6	6			
43	2	719260-23600	BEARING, CRANKPIN	3	3	3	3	3			
45	1	119265-22930	PISTON W/RING OS=.25	3	3		3	3		2	
46	1	119265-22900	PISTON ASSY O.S=.25			3				2	
49	2	119265-22950	RING SET O.S=.25	3	3	3	3	3		2	
53	1	719260-23610	BEARING,PIN U.S=.25	3	3	3	3	3		3	
55	1	119888-21450	RETAINER, BEARING	1			1			W	
(A=FROM 1ST)											
56	1	24107-062054	BALL BEARING	1			1			W	
(A=FROM 1ST)											
57	1	26106-080222	BOLT M 8X 22 PLATED	3			3			W	
(A=FROM 1ST)											

Remarks  
(1) REPAIR PART.  
(2) OVER-SIZE(O.S=0.25)PART.  
(3) UNDER-SIZE(U.S=0.25)PART.

Fig.9. LUB.OIL SYSTEM

(A)=3TNE68-SA  
(B)=3TNE68-G1A  
(C)=3TNE68-G2A

(D)=3TNE68C-SA  
(E)=3TNE68C-G1A  
(F)=



REF.	LEV.	PARTS NO.	DESCRIPTION	Q'TY						I	R
				(A)	(B)	(C)	(D)	(E)	(F)		
1	1	119260-32000	PUMP ASSY, LUB. OIL	1	1	1	1	1			
11	1	119660-32020	GASKET, L.O.PUMP	1	1	1	1	1			
12	1	26450-060202	BOLT M 6X 20	3	3	3	3	3			
13	1	119305-35150	FILTER, LUB. OIL	1	1	1	1	1			
14	1	119225-35300	VALVE ASSY,OIL PRESS	1	1		1	1			
15	1	119265-35300	VALVE ASSY,OIL PRESS					1			
24	1	129150-35350	NUT	1	1	2	1	1			
25	1	119260-35081	PIPE ASSY,OIL INTAKE	1	1	1	1	1			
26	1	24311-000120	O-RING 1A P 12.0	1	1	1					
I 26-1	1	24311-000110	O-RING 1A P-11.0	1	1	1	1	1		R	
		(A=EXXX) (B=EXXX) (C=EXXX)									
I 26-2	1	119209-35030	O-RING	1	1	1	1	1		R	
		(A=E31086) (B=E33561) (C=E31085) (D=E00605) (E=E00590)									
27	1	26106-060122	BOLT M 6X 12 PLATED	2	2	2	2	2			
28	1	124160-39450	SWITCH, OIL PRESSURE	1	1	1	1	1			
29	1	171375-39600	DAMPER ASSY	1	1	1	1	1		1	
I 29-1	1	171375-39601	DUMPER ASSY	1	1	1	1	1		R 1	
		(A=E21604) (B=E28743) (C=E23781) (D=E00493) (E=E00489)									
I 30	2	129470-39610	DAMPER	1	1	1	1	1		Z 1	
		(A=E21604) (B=E28743) (C=E23781) (D=E00493) (E=E00489)									
I 31	2	23161-020100	BUSH PT1/4X1/8	1	1	1	1	1		Z 1	
		(A=E21604) (B=E28743) (C=E23781) (D=E00493) (E=E00489)									
32	1	144626-91560	TACHO UNIT	1	1	1	1	1		1	
33	1	119225-34810	GUIDE, DIPSTICK	1	1	1	1	1			
34	1	119260-34810	GUIDE, DIPSTICK	1	1	1	1	1			
35	1	119620-34822	DIPSTICK, LUB. OIL	1	1	1					
I 35-1	1	119285-34821	DIPSTICK, LUB. OIL	1	1	1	1	1		N	
		(A=E15864) (B=E15735) (C=E23781)									
36	1	24311-240100	O-RING 1A P-10A	1	1	1	1	1			
37	1	26106-060102	BOLT M 6X 10 PLATED	1	1	1	1	1			
38	1	171008-03990	CLAMP 18.5					4			
39	1	119642-33030	COOLER, OIL					1			
40	1	119642-33100	BRACKET					1			
41	1	129122-44480	JOINT					1			
42	1	129122-44480	JOINT					1			
43	1	119642-49030	PIPE					1			
44	1	129403-49050	PIPE,COOLER-C.W.PUMP					1			
45	1	24321-000600	O-RING 1A G-60.0					1			
46	1	24321-000700	O-RING 1A G70.0,NBR					1			

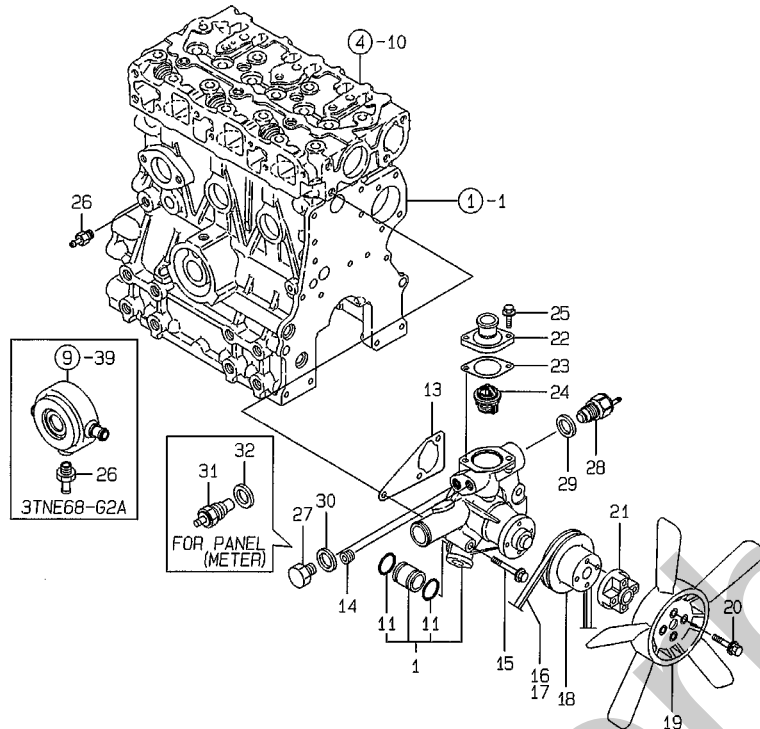
Remarks  
(1) FOR PANEL(METER).

Fig.10. COOLING WATER SYSTEM

(A)=3TNE68-SA  
(B)=3TNE68-G1A  
(C)=3TNE68-G2A

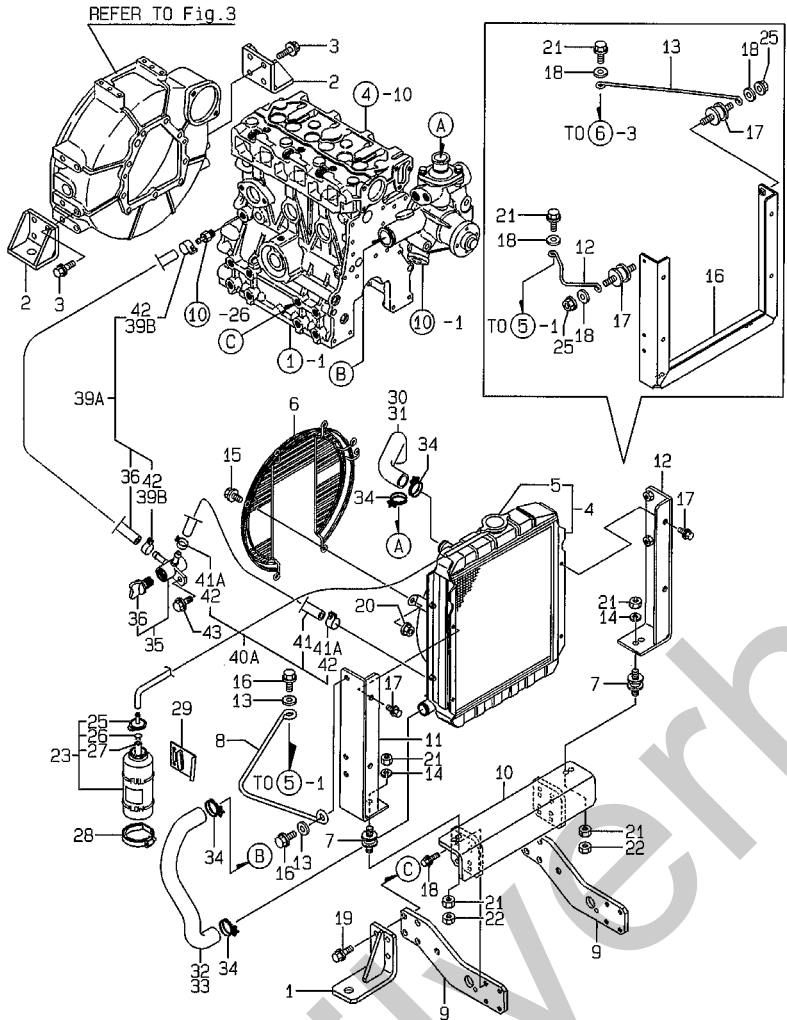
(D)=3TNE68C-SA  
(E)=3TNE68C-G1A  
(F)=

REF.	LEV.	PARTS NO.	DESCRIPTION	QTY						I	R
				(A)	(B)	(C)	(D)	(E)	(F)		
1	1	119265-42002	PUMP ASSY, C. WATER	1	1	1	1	1			
11	2	24311-000210	O-RING 1A P-21.0	2	2	2	2	2			
13	1	119260-42020	GASKET, C.W. PUMP	1	1	1	1	1			
14	1	171056-49120	PLUG, DRAIN	1	1		1	1			
15	1	26106-080452	BOLT M 8X 45 PLATED	3	3	3	3	3			
16	1	104514-42780	V-BELT (HM-33)	1	1		1	1			
17	1	119256-42290	V-BELT 33.5					1			
I 17-1	1	104514-42780	V-BELT (HM-33) (C=E23781)					1		N	
18	1	119620-42350	V-PULLEY, C.W. PUMP	1	1	1	1	1			
19	1	124700-44740	FAN, COOLING	1	1	1	1	1			
20	1	26014-060352	BOLT M 6X 35	4	4	4	4	4			
21	1	121267-44760	SPACER	1	1	1	1	1			
22	1	129350-49530	COVER, THERMOSTAT	1	1	1	1	1			
23	1	129350-49541	GASKET, (NON-ASB.)	1	1	1	1	1			
24	1	129350-49800	THERMOSTAT (71 C	1	1	1	1	1			
25	1	26106-080202	BOLT M 8X 20 PLATED	2	2	2	2	2			
26	1	121550-49111	JOINT PT1/4	1	1	1	1	1			
27	1	121450-42450	PLUG M16	1	1	1	1	1			
28	1	121250-44901	SWITCH, THERMO(110 C	1	1	1	1	1			
29	1	124465-44950	GASKET 16	1	1	1	1	1			
30	1	124465-44950	GASKET 16	1	1	1	1	1			
31	1	124250-49351	THERMOMETER	1	1	1	1	1		1	
32	1	129150-49360	GASKET 10	1	1	1	1	1		1	



Remarks  
(1) FOR PANEL(METER).

Fig.11. RADIATOR



(A)=3TNE68-SA  
(B)=3TNE68-G1A  
(C)=3TNE68-G2A  
(D)=3TNE68C-SA  
(E)=3TNE68C-G1A  
(F)=

REF.	LEV.	PARTS NO.	DESCRIPTION	QTY						I	R
				(A)	(B)	(C)	(D)	(E)	(F)		
1	1	119288-08100	BRACKET (A), ENGINE	2	2	2	2				
2	1	119888-08110	BRACKET (B), ENGINE	2	2		2	2			
3	1	26106-100202	BOLT M10X 20 PLATED	8	8		8	8			
4	1	119621-44500	RADIATOR	1	1	1	1	1			
5	2	119259-44570	CAP, RADIATOR	1	1	1	1	1			
I 5A	2	X2411365340	SHROUD, FAN	1	1	1	1	1			W
		(A=FROM 1ST) (B=FROM 1ST) (C=FROM 1ST) (D=FROM 1ST) (E=FROM 1ST)		1	1	1	1	1			W
I 5B	2	129132-44530	HOSE, C.WATER	1	1	1	1	1			W
		(A=FROM 1ST) (B=FROM 1ST) (C=FROM 1ST) (D=FROM 1ST) (E=FROM 1ST)		1	1	1	1	1			W
I 5C	2	121250-44590	CLAMP	2	2	2	2	2			W
		(A=FROM 1ST) (B=FROM 1ST) (C=FROM 1ST) (D=FROM 1ST) (E=FROM 1ST)		2	2	2	2	2			W
I 5D	2	26014-080162	BOLT M 8X 16	4	4	4	4	4			W
		(A=FROM 1ST) (B=FROM 1ST) (C=FROM 1ST) (D=FROM 1ST) (E=FROM 1ST)		4	4	4	4	4			W
6	1	119621-44560	FAN-GUARD	1	1	1	1	1			
7	1	121400-44650	ABSORBER, SHOCK	2	2		2	2			
8	1	119265-44940	RETAINING BAR	1	1		1	1			
I 8-1	1	119265-44941	RETAINER	1	1		1	1			N
		(A=E43439) (B=E43760) (D=E01000) (E=E01001)		1	1		1	1			N
9	1	119688-44950	BRACKET (A)	2	2		2	2			
10	1	119688-44961	BRACKET (B), RAD	1	1		1	1			
11	1	119688-44971	BRACKET (L)	1	1		1	1			
I 11-1	1	119688-44972	SUPPORT	1	1		1	1			N
		(A=E43439) (B=E43760) (D=E01000) (E=E01001)		1	1		1	1			N
I 12	1	119688-44981	BRACKET (R)	1	1		1	1			Z
		(A=E43439) (B=E43760) (D=E01000) (E=E01001)		1	1		1	1			Z
13	1	22137-080000	WASHER 8, POLISHED	2	2		2	2			
I 13-1	1	22137-080000	WASHER 8, POLISHED	4	4		4	4			K
		(A=E43439) (B=E43760) (D=E01000) (E=E01001)		4	4		4	4			K
14	1	22217-100000	SPRING WASHER 10	2	2		2	2			
15	1	26106-080122	BOLT M 8X 12 PLATED	6	6	6	6	6			
16	1	26106-080162	BOLT M 8X 16 PLATED	2	2		2	2			
17	1	26106-080202	BOLT M 8X 20 PLATED	4	4		4	4			
18	1	26106-080252	BOLT M 8X 25 PLATED	8	8		8	8			
19	1	26116-100302	BOLT 10X30	8	8		8	8			
20	1	26366-080002	NUT M 8	6	6	6	6	6			
I 20-1	1	26306-080002	NUT	6	6	6	6	6			N
		(A=E43439) (B=E43760) (D=E01000) (E=E01001)		6	6	6	6	6			N
		(A=E43439) (B=E43760) (D=E01000) (E=E01001)		6	6	6	6	6			N
21	1	26716-100002	NUT 10	4	4		4	4			
22	1	26756-100002	LOCK NUT M10 PLATED	2	2		2	2			
23	1	124450-44510	SUB-TANK ASSY	1	1	1	1	1			
25	2	124450-44530	CAP	1	1	1	1	1			
26	2	124450-44560	CLAMP	1	1	1	1	1			
27	2	23061-070230	PIPE 7X 230	1	1	1	1	1			
28	1	124450-44550	CLAMP, SUB-TANK	1	1	1	1	1			
29	1	121256-44600	BRACKET, SUB-TANK	1	1	1	1	1			
30	1	119688-49010	PIPE (A), C. WATER	1	1	1	1	1			1
31	1	119288-49010	PIPE A, COOLING WATER	1	1		1	1			
32	1	119645-49020	PIPE (B), C. WATER	1	1	1	1	1			1
33	1	119280-49020	PIPE (B), C. WATER	1	1		1	1			
34	1	23010-038000	CLAMP 38	4	4	4	4	4			
35	1	129150-49100	COCK ASSY, 3-WAY	1	1	1	1	1			

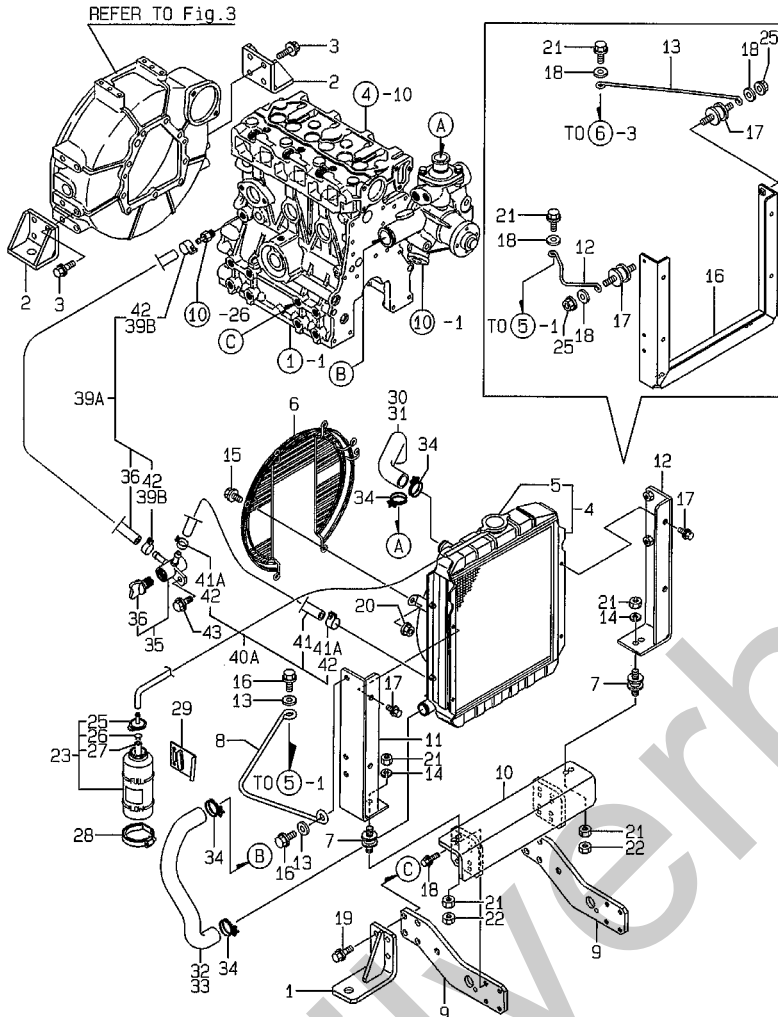
Remarks  
(1) LOOSE PART.

N:Old  $\frac{Yes}{No}$  New, Q:Old  $\frac{No}{Yes}$  New, R:Old  $\frac{Yes}{Yes}$  New, S:Old  $\frac{No}{No}$  New, W:Add, Z:Discontinued, F:Interchangeable by set, K:Q'ty Change  
++ CONTINUE ++  
(C)Copy Rights YANMAR CO.,LTD.

Fig.11. RADIATOR

(A)=3TNE68-SA  
(B)=3TNE68-G1A  
(C)=3TNE68-G2A

(D)=3TNE68C-SA  
(E)=3TNE68C-G1A  
(F)=



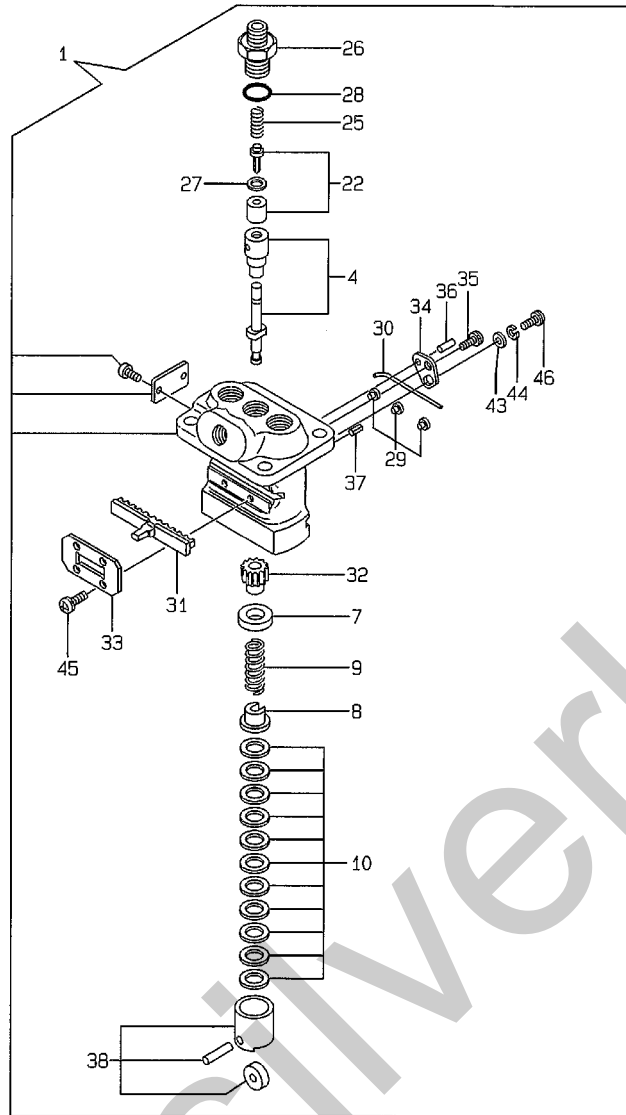
REF.	LEV.	PARTS NO.	DESCRIPTION	Q'TY						I	R
				(A)	(B)	(C)	(D)	(E)	(F)		
I 36	2	129150-49080	COCK, DRAIN	1	1	1	1	1			
I 39A	1	129210-49250	PIPE, WATER DRAIN	1	1		1	1		W	
		(A=EXXX) (B=EXXX)	(D=EXXX) (E=EXXX)								
I 39B	2	124766-59050	CLAMP 12	2	2		2	2		W	
		(A=EXXX) (B=EXXX)	(D=EXXX) (E=EXXX)								
I 40	2	121750-49150	PIPE, C. WATER	1	1		1	1			
I 40A	1	129210-49110	PIPE ASSY, DRAIN	1	1		1	1		W	
		(A=EXXX) (B=EXXX)	(D=EXXX) (E=EXXX)								
I 41	2	121023-49150	HOSE, WATER DRAIN 165	1	1		1	1			
I 41A	2	124766-59050	CLAMP 12	2	2		2	2		W	
		(A=EXXX) (B=EXXX)	(D=EXXX) (E=EXXX)								
I 42	1	124766-59050	CLAMP 12	4	4		4	4		Z	
		(A=EXXX) (B=EXXX)	(D=EXXX) (E=EXXX)								
43	1	26106-080162	BOLT M 8X 16 PLATED	1	1		1	1			
I 44	1	119265-44950	RETAINER	1	1		1	1		W	
		(A=E43436) (B=E43760)	(D=E01000) (E=E01001)								
I 45	1	26366-060002	NUT M 6	2	2		2	2		W	
		(A=E43436) (B=E43760)	(D=E01000) (E=E01001)								
I 46	1	127694-91050	GROMMET	2	2		2	2		W	
		(A=E43436) (B=E43760)	(D=E01000) (E=E01001)								

Remarks  
(1) LOOSE PART.

Fig.12. FUEL INJECTION PUMP

(A)=3TNE68-SA  
(B)=3TNE68-G1A  
(C)=3TNE68-G2A

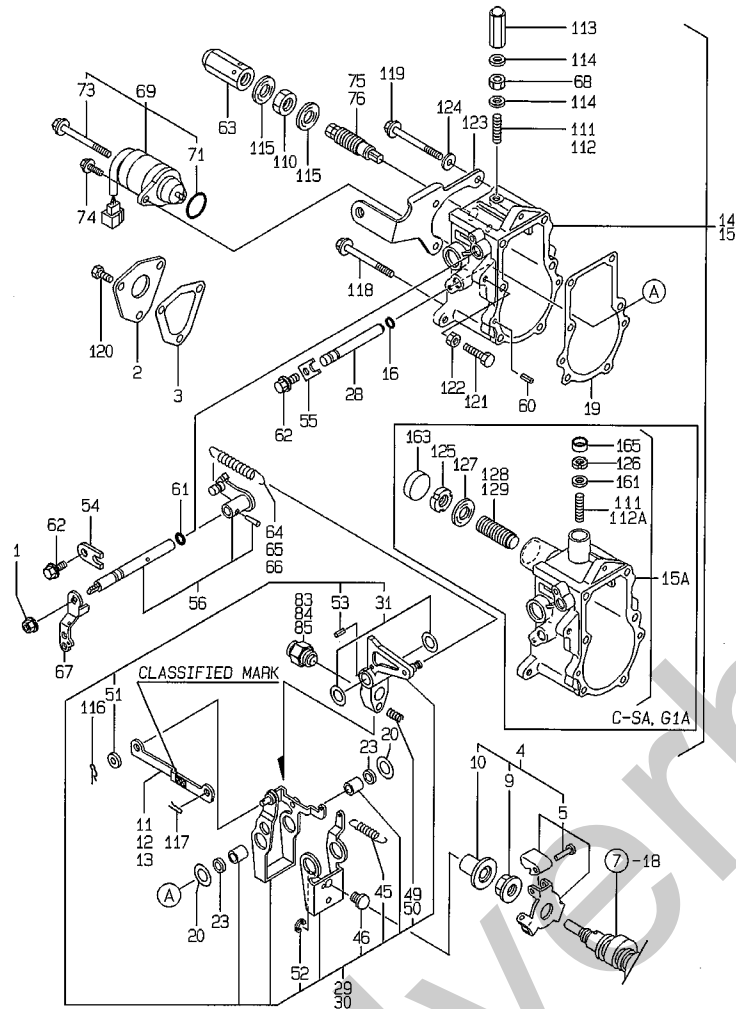
(D)=3TNE68C-SA  
(E)=3TNE68C-G1A  
(F)=



REF.	LEV.	PARTS NO.	DESCRIPTION	Q'TY						I	R
				(A)	(B)	(C)	(D)	(E)	(F)		
1	1	719225-51100	F.I.PUMP ASSY	1	1	1	1	1			
4	2	119225-51100	PLUNGER W/BARREL	3	3	3	3	3			
7	2	119620-51170	RETAINER	3	3	3	3	3			
8	2	119620-51180	RETAINER	3	3	3	3	3			
9	2	119620-51190	SPRING, PLUNGER	3	3	3	3	3			
10	2	119620-51250	SHIM PACK	3	3	3	3	3			
22	2	119225-51300	VALVE W/SEAT, DELIV.	3	3	3	3	3			
25	2	105546-51330	SPRING, DELIV. VALVE	3	3	3	3	3			
26	2	119620-51340	HOLDER, DELIV. VALVE	3	3	3	3	3			
27	2	119620-51350	GASKET, DELIVERY	3	3	3	3	3			
28	2	119620-51370	O-RING	3	3	3	3	3			
29	2	119620-51450	GUIDE, PLUNGER	3	3	3	3	3			
30	2	119620-51461	PIN	1	1	1	1	1			
31	2	119660-51500	RACK	1	1	1	1	1			
32	2	119620-51510	PINION	3	3	3	3	3			
33	2	119660-51530	RETAINER, RACK	1	1	1	1	1			
34	2	119620-51650	PLATE	2	2	2	2	2			
35	2	119620-51660	SCREW	2	2	2	2	2			
36	2	119620-51670	PIN	2	2	2	2	2			
37	2	119620-51680	PIN	1	1	1	1	1			
38	2	119620-51700	TAPPET ASSY	3	3	3	3	3			
43	2	22137-040000	WASHER 4, POLISHED	2	2	2	2	2			
44	2	22217-040000	SPRING WASHER 4	2	2	2	2	2			
45	2	26022-040082	SCREW M 4X 8	4	4	4	4	4			
46	2	26587-040102	SCREW M 4X 10	2	2	2	2	2			

Fig.13. GOVERNOR

(A)=3TNE68-SA  
 (B)=3TNE68-G1A  
 (C)=3TNE68-G2A  
 (D)=3TNE68C-SA  
 (E)=3TNE68C-G1A  
 (F)=



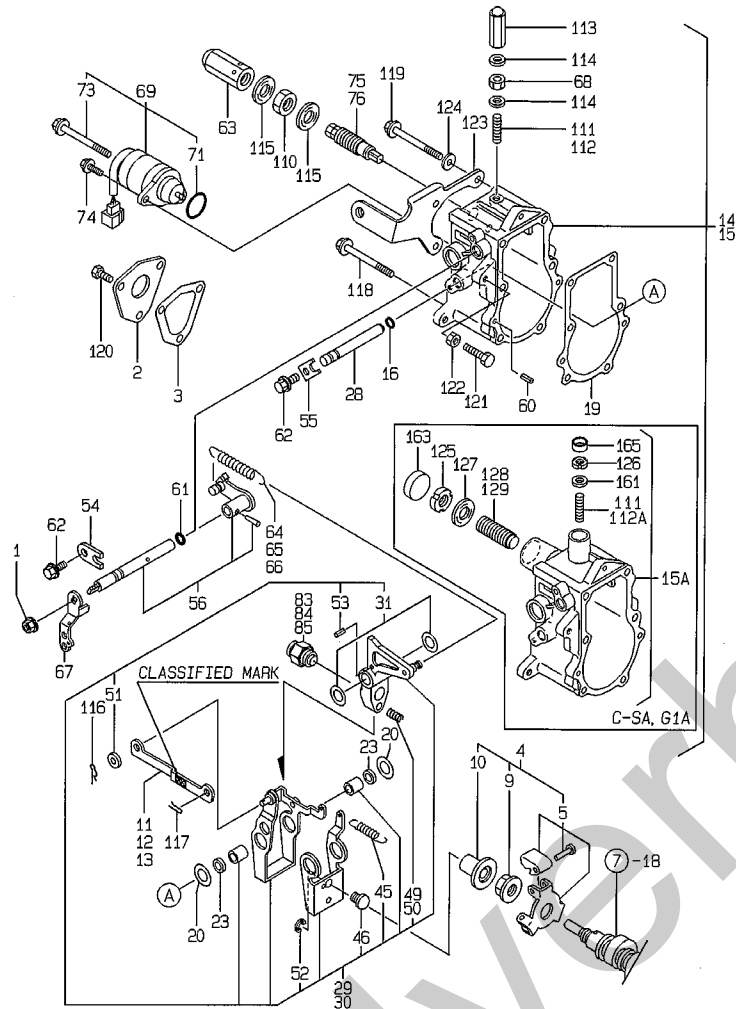
Remarks  
 (1) SELECTIVE PARTS : CERTAIN THE CLASSIFICATION MARK, THEN PLACE YOUR ORDER.(REF. TO ILLUSTRATION)  
 (2) REPAIR PART.

REF.	LEV.	PARTS NO.	DESCRIPTION	Q'TY						I	R
				(A)	(B)	(C)	(D)	(E)	(F)		
1	1	194990-22050	NUT W/WASHER 8	1	1	1	1	1			
2	1	119660-61060	COVER, GOVERNOR CASE	1	1	1	1	1			
3	1	119660-61071	GASKET, (NON-ASB.)	1	1	1	1	1			
4	1	119600-61100	DRIVING SET, GOV.	1	1	1	1	1			
5	2	119600-61200	WEIGHT ASSY, GOV.	1	1	1	1	1			
9	2	119660-61300	NUT, GOVERNOR WEIGHT	1	1	1	1	1			
10	2	119660-61341	SLEEVE, GOVERNOR	1	1	1	1	1			
11	1	119660-61121	LINK L=88.8(NO COLOR)	1	1	1	1	1		1	
12	1	119660-61140	LINK L=88.6(WHITE)	1	1	1	1	1		1	
13	1	119660-61150	LINK L=89.0(RED)	1	1	1	1	1		1	
14	1	119632-61200	CASE ASSY, GOVERNOR	1	1						
15	1	119288-61200	CASE ASSY, GOVERNOR			1					
15A	1	119623-61200	CASE ASSY, GOVERNOR				1	1			
16	2	129155-51280	O-RING S6	1	1	1	1	1			
19	2	119660-61052	GASKET, (NON-ASB.)	1	1	1	1	1			
20	2	119660-61460	SHIM SET	1	1	1	1	1			
23	2	129155-61480	SPACER ASSY	2	2	2	2	2			
28	2	119660-61491	SHAFT,GOVERNOR LEVER	1	1	1	1	1			
29	2	119232-61510	LEVER ASSY, GOVERNOR	1	1		1	1			
30	2	119288-61510	LEVER ASSY, GOVERNOR			1					
31	3	174307-51700	SHIM SET	2	2	2	2	2			
45	3	119232-61540	SPRING, LEVER	1	1	1	1	1			
46	3	119600-61541	SHIFTER,P.T.O.	1	1	1	1	1			
49	3	119660-61651	SPRING, STARTING	1	1		1	1			
50	3	119600-61650	SPRING, STARTING			1					
51	3	22117-040000	WASHER 4	1	1	1	1	1			
52	3	22272-000040	CIRCLIP E- 4	1	1	1	1	1			
53	3	22351-030014	SPRING PIN 3X14	1	1	1	1	1			
54	2	119600-61900	RETAINER, SHAFT	1	1	1	1	1			
55	2	119660-61901	RETAINER, SHAFT	1	1	1	1	1			
56	2	119285-66080	SHAFT ASSY,REGULATOR	1	1	1	1	1			
60	2	22351-040010	SPRING PIN 4X10	2	2	2	2	2			
61	2	24341-000070	O-RING 1A S-7.0	1	1	1	1	1			
62	2	26106-060102	BOLT M 6X 10 PLATED	2	2	2	2	2			
63	1	129100-61930	NUT, CAP	1	1	1					
64	1	119600-66020	SPRING, REGULATOR	1			1				
65	1	119489-66010	SPRING, REGULATOR		1			1			
66	1	119260-66010	SPRING, REGULATOR			1					
67	1	119621-66051	LEVER, REGULATOR	1	1	1	1	1			
68	1	124550-66370	LOCK NUT M 6	1	1	1					
69	1	119653-66500	ENGINE STOP DEVICE	1	1	1	1	1			
71	2	24341-000280	O-RING 1A S-28.0	1	1	1	1	1			
73	2	26106-060952	BOLT M 6X 95 PLATED	1	1	1	1	1			
74	1	121465-59950	BOLT M 6X 16, PLATED	1	1	1	1	1			
75	1	119600-66530	TORQUE SPRING ASSY	1							
76	1	119629-66510	TORQUE SPRING ASSY		1	1					
83	1	119654-66700	ANGLEIGH ASSY	1			1				
84	1	119610-66700	ANGLEICH ASSY		1			1			
85	1	119260-66720	ANGLEICH ASSY			1					
110	1	26776-120002	LOCK NUT M12 PLATED	1	1	1					
111	1	121575-66830	SCREW, ADJUST	1	1	1		1			

Fig.13. GOVERNOR

(A)=3TNE68-SA  
(B)=3TNE68-G1A  
(C)=3TNE68-G2A

(D)=3TNE68C-SA  
(E)=3TNE68C-G1A  
(F)=



REF.	LEV.	PARTS NO.	DESCRIPTION	QTY						I	R
				(A)	(B)	(C)	(D)	(E)	(F)		
112	1	171002-66830	SCREW, ADJUST		1						
I 112A	1	119988-61460	BOLT, REVOL. LIMIT					1			
113	1	119600-66840	NUT, CAP	1	1	1					
114	1	22190-060003	WAHER 6, SEAL	2	2	2					
115	1	22190-120002	SEAL WASHER 12	2	2	2					
116	1	22360-040000	SNAP PIN 4	1	1	1	1	1			
117	1	22360-060000	SNAP PIN 6	1	1	1	1	1			
118	1	26106-060702	BOLT M 6X 70 PLATED	2	2	2	2	2			
119	1	26106-060752	BOLT M 6X 75 PLATED	3	3	3	3	3			
120	1	26116-050102	BOLT M 5X 10 PLATED	3	3	3	3	3			
121	1	26116-060304	BOLT M 6X 30 PLATED	1	1	1	1	1			
122	1	26756-060002	LOCK NUT 6	1	1	1	1	1			
123	1	119288-55900	BRACKET, FUEL FILTER	1	1	1					
I 123-1	1	119288-55901	BRACKET	1	1	1	1	1			N
		(A=E16738)	(B=E28743)	(C=E23781)							
124	1	22111-060000	WASHER 6	3	3	3	3	3			
I 125	1	119685-61940	CARB NUT(FO-LIMIT)					1	1		
I 126	1	119685-61950	CARB NUT(HI-IDLE)					1	1		
I 127	1	22190-120002	SEAL WASHER 12					1	1		
I 128	1	119621-66500	LIMITTER, FUEL OIL					1			
I 129	1	119489-66500	FUEL LIMITR(CARB ASY)						1		
I 161	2	22190-060003	WAHER 6, SEAL					1	1		
I 163	1	119621-66610	PLUG 22					1	1		2
I 165	1	119621-66710	PLUG 14					1	1		2

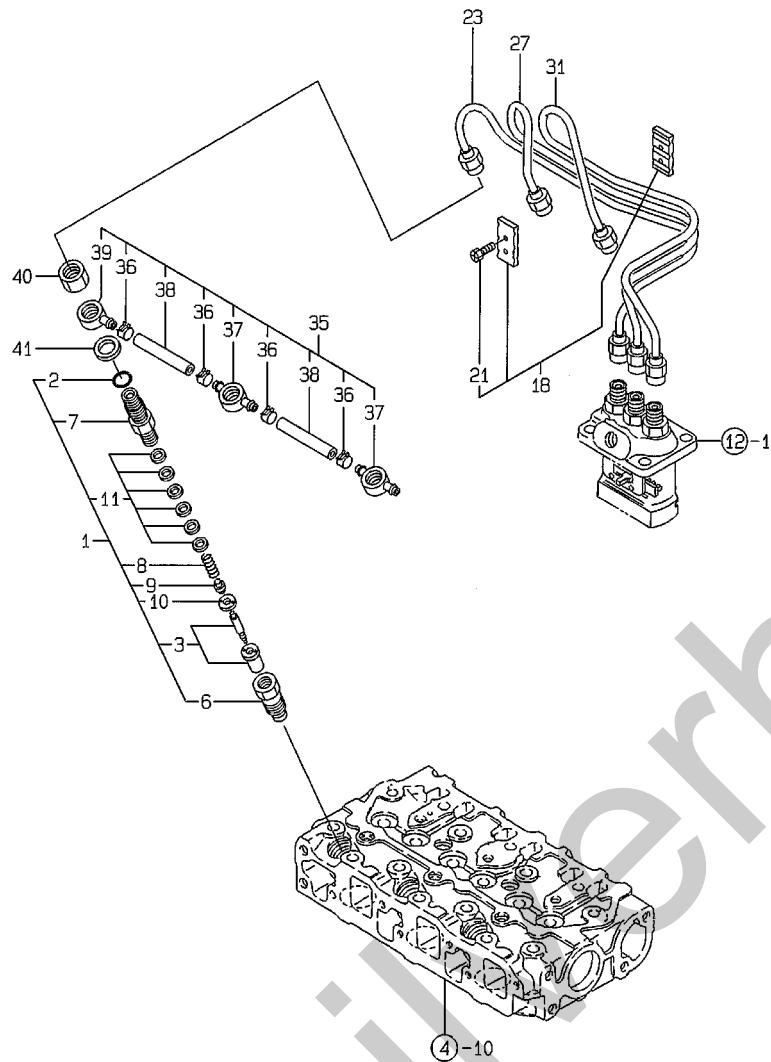
Remarks  
 (1) SELECTIVE PARTS : CERTAIN THE CLASSIFICATION MARK, THEN PLACE YOUR ORDER.(REF. TO ILLUSTRATION)  
 (2) REPAIR PART.



Fig.14. FUEL INJECTION VALVE

(A)=3TNE68-SA  
(B)=3TNE68-G1A  
(C)=3TNE68-G2A

(D)=3TNE68C-SA  
(E)=3TNE68C-G1A  
(F)=

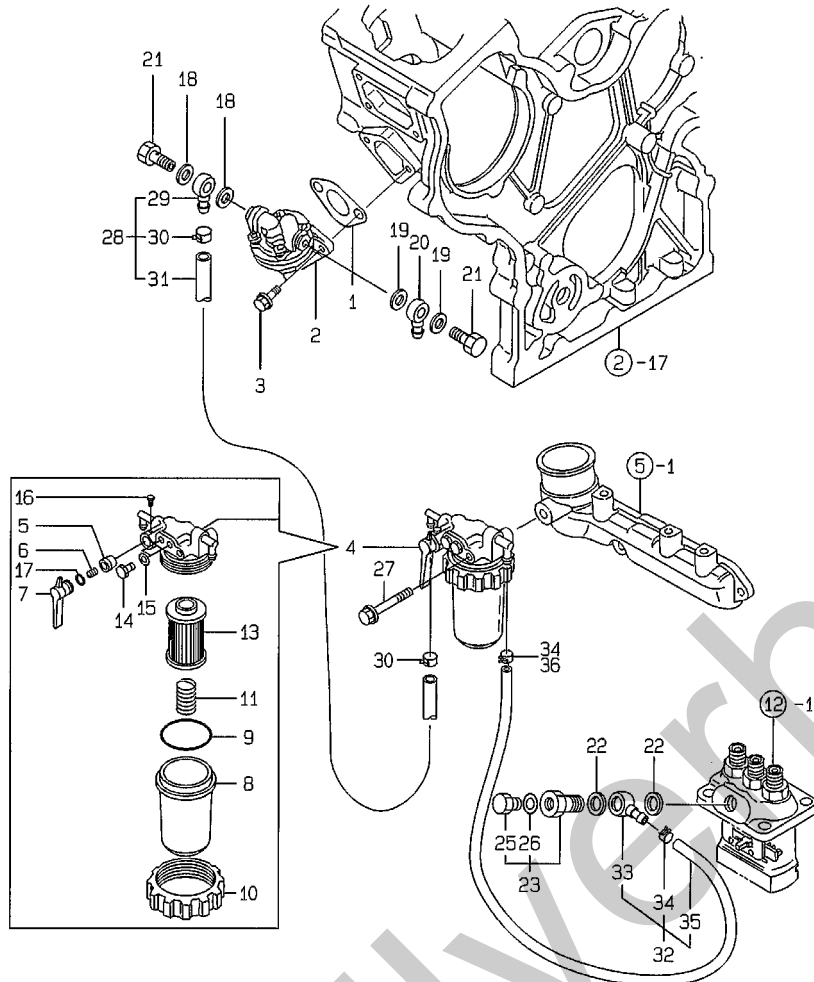


REF.	LEV.	PARTS NO.	DESCRIPTION	Q'TY						I	R
				(A)	(B)	(C)	(D)	(E)	(F)		
1	1	719620-53700	VALVE ASSY, F.INJECT	3	3	3	3	3			
2	2	129155-51580	O-RING	3	3	3					
I 2-1	2	129155-61830	O-RING S10	3	3	3	3	3			N
3	2	(A=E10627) 119620-53000	(B=E10548) NOZZLE ASSY,F.INJECT	3	3	3	3	3			
6	2	119620-53080	NUT, VALVE W/CASE	3	3	3	3	3			
7	2	119620-53100	HOLDER, VALVE W/CASE	3	3	3	3	3			
8	2	119620-53120	SPRING, VALVE	3	3	3	3	3			
9	2	114250-53130	SEAT, NOZZLE SPRING	3	3	3	3	3			
10	2	119620-53140	SPACER, VALVE STOP	3	3	3	3	3			
11	2	114250-53400	SHIM PACK	3	3	3	3	3			
18	1	129150-59120	RETAINER, INJ. PIPE	1	1	1	1	1			
21	2	129150-59131	BOLT M4X14,HEX.SCKT.	2	2	2	2	2			
23	1	119225-59810	PIPE (1),FUEL INJECT	1	1	1	1	1			
I 23-1	1	119209-59810	PIPE (1),FUEL INJECT	1	1	1	1	1			N
27	1	(A=E19144) 119260-59820	(B=E28743) PIPE (2),FUEL INJECT	1	1	1	1	1			
I 27-1	1	119209-59820	PIPE (2),FUEL INJECT	1	1	1	1	1			N
31	1	(A=E19144) 119260-59830	(B=E28743) PIPE (3),FUEL INJECT	1	1	1	1	1			
I 31-1	1	119209-59830	PIPE (3),FUEL INJECT	1	1	1	1	1			N
35	1	(A=E19144) 119260-59540	(B=E28743) PIPE ASSY, FUEL OVER	1	1	1	1	1			
36	2	124066-59100	CLAMP 8	4	4	4	4	4			
37	2	119260-59530	JOINT (A)	2	2	2	2	2			
38	2	119260-59550	PIPE, FUEL	2	2	2	2	2			
39	2	119260-59520	JOINT (B)	1	1	1	1	1			
40	1	119620-59700	NUT	3	3	3	3	3			
41	1	23414-140000	GASKET 14, ROUND	3	3	3	3	3			

Fig.15. FUEL FILTER

(A)=3TNE68-SA  
(B)=3TNE68-G1A  
(C)=3TNE68-G2A

(D)=3TNE68C-SA  
(E)=3TNE68C-G1A  
(F)=



REF.	LEV.	PARTS NO.	DESCRIPTION	QTY						I	R
				(A)	(B)	(C)	(D)	(E)	(F)		
1	1	121520-01851	GASKET, (NON-ASB.)	1	1	1	1	1			
2	1	119600-52021	PUMP ASSY, FUEL FEED	1	1	1	1	1			
3	1	26106-060162	BOLT M 6X 16 PLATED	2	2	2	2	2			
4	1	171059-55600	STRAINER ASSY, FUEL	1	1	1	1	1			
5	2	104200-55321	VALVE, TAPER	1	1	1	1	1			
6	2	104200-55330	SPRING, TAPER VALVE	1	1	1	1	1			
7	2	104200-55341	HANDLE, COCK	1	1	1	1	1			
8	2	121254-55510	CUP, STRAINER	1	1	1	1	1			
9	2	102103-55520	O-RING	1	1	1	1	1			
10	2	110250-55610	RING, RETAINING	1	1	1	1	1			
11	2	121250-55620	SPRING	1	1	1	1	1			
13	2	124550-55700	ELEMENT	1	1	1	1	1			
14	2	101720-55750	PLUG 6	2	2	2	2	2			
15	2	23418-060000	GASKET 6, NYLON	2	2	2	2	2			
16	2	104200-55750	SCREW M 4	1	1	1	1	1			
17	2	24311-240100	O-RING 1A P-10A	1	1	1	1	1			
18	1	22190-080002	SEAL WASHER 8S	2	2	2	2	2			
19	1	22190-080002	SEAL WASHER 8S	2	2	2	2	2			
20	1	104264-59030	JOINT 8, PIPE	1	1	1	1	1			
21	1	105582-59150	BOLT, PIPE JOINT	2	2	2	2	2			
22	1	104200-59170	GASKET 12	2	2	2	2	2			
23	1	103854-59191	BOLT W/PLUG & SEAL	1	1	1	1	1			
25	2	124060-59380	PLUG	1	1	1	1	1			
26	2	22190-060002	SEAL WASHER 6S	1	1	1	1	1			
27	1	26014-080702	BOLT W/WASHER M8X 70	1	1	1	1	1			
28	1	119260-59020	PIPE,FUEL (D12XL400)	1	1	1	1	1			
29	2	104264-59030	JOINT 8, PIPE	1	1	1	1	1			
30	2	124766-59050	CLAMP 12	2	2	2	2	2			
31	2	121236-59080	PIPE,FUEL (D12XL400)	1	1	1	1	1			
I 31-1	2	121024-59090	PIPE,FUEL (D12XL450)	1	1	1	1	1		N	
		(A=E10627) (B=E10548) (C=E23781)									
32	1	119260-59030	PIPE W/JOINT, FUEL	1	1	1					
I 32-1	1	119260-59031	PIPE W/JOINT, FUEL	1	1	1				N	
		(A=E10627) (B=E10548) (C=E23781)									
I 32-2	1	124160-59011	PIPE ASSY, FUEL OIL	1	1	1	1	1		N	
		(A=E10627) (B=E10548) (C=E23781)									
I 32-3	1	119621-59010	PIPE ASSY, FUEL	1	1	1				N	
		(A=E63287) (B=E62973) (C=E62685)									
33	2	101304-59020	JOINT 12, PIPE	1	1	1	1	1			
34	2	124766-59050	CLAMP 12	2	2	2					
I 34-1	2	124766-59050	CLAMP 12	1	1	1	1	1		K	
		(A=E10627) (B=E10548) (C=E23781)									
I 34-2	2	124766-59050	CLAMP 12	2	2	2				K	
		(A=E63287) (B=E62973) (C=E62685)									
35	2	105990-59560	PIPE, FUEL	1	1	1					
I 35-1	2	124767-59080	PIPE, F.O.	1	1	1				N	
		(A=E10627) (B=E10548) (C=E23781)									
I 35-2	2	124160-59080	PIPE	1	1	1	1	1		N	
		(A=E10627) (B=E10548) (C=E23781)									
I 35-3	2	121024-59090	PIPE,FUEL (D12XL450)	1	1	1				N	
		(A=E63287) (B=E62973) (C=E62685)									

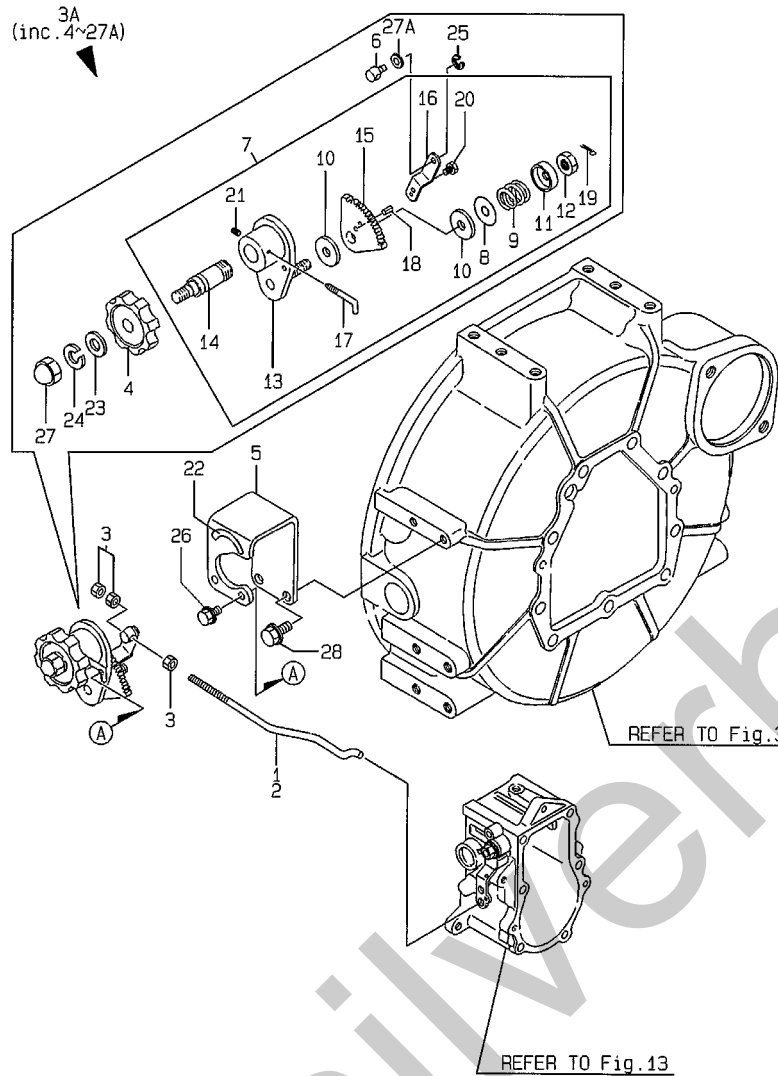
N:Old  $\begin{matrix} \leftarrow \text{Yes} \\ \text{No} \end{matrix}$  New, Q:Old  $\begin{matrix} \leftarrow \text{No} \\ \text{Yes} \end{matrix}$  New, R:Old  $\begin{matrix} \leftarrow \text{Yes} \\ \text{Yes} \end{matrix}$  New, S:Old  $\begin{matrix} \leftarrow \text{No} \\ \text{No} \end{matrix}$  New, W:Add, Z:Discontinued, F:Interchangeable by set, K:Q'ty Change  
 ++ CONTINUE ++  
 (C)Copy Rights YANMAR CO.,LTD.



Fig.16. ENGINE CONTROL DEVICE

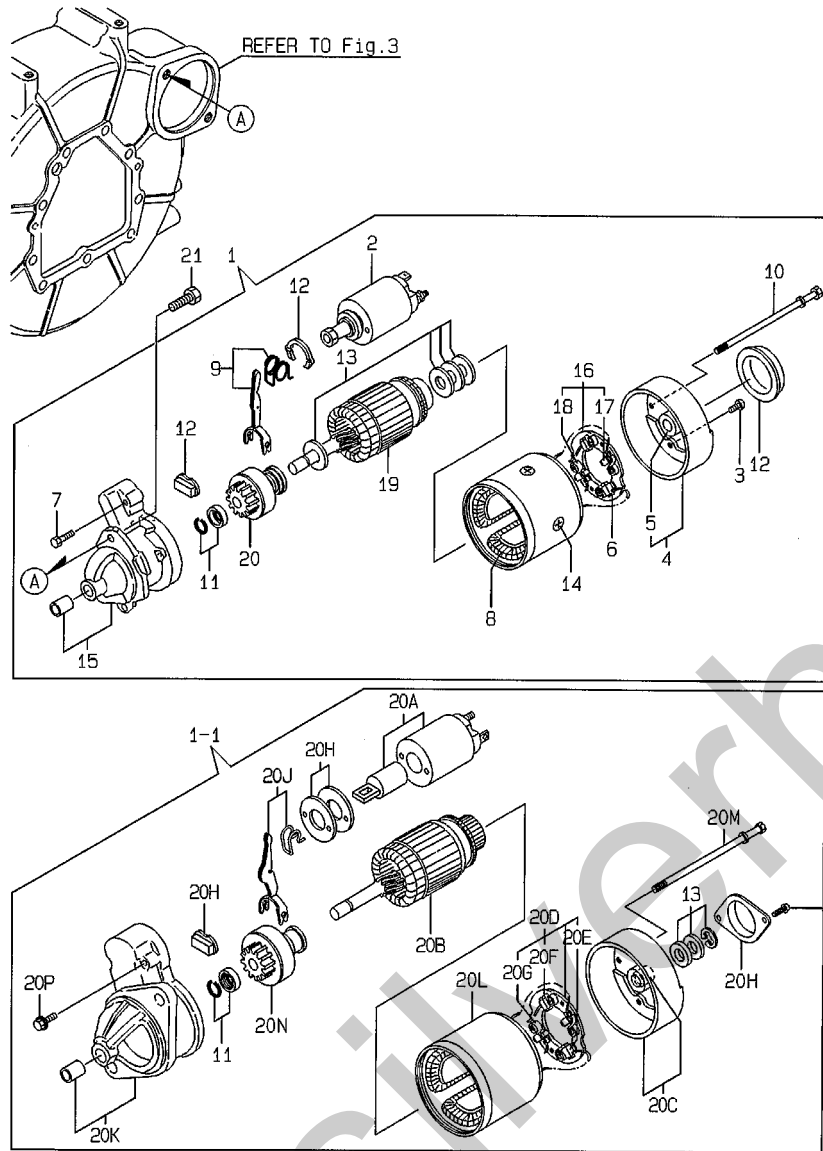
(A)=3TNE68-SA  
(B)=3TNE68-G1A  
(C)=3TNE68-G2A

(D)=3TNE68C-SA  
(E)=3TNE68C-G1A  
(F)=



REF.	LEV.	PARTS NO.	DESCRIPTION	QTY						I	R
				(A)	(B)	(C)	(D)	(E)	(F)		
1	1	119288-66120	LINK, ENGINE CONTROL	1	1		1	1			
2	1	119288-66160	LINK, ENGINE CONTROL			1					
3	1	26756-050002	LOCK NUT M 5 PLATED	3	3	3	3	3			
I	3A	119888-66160 (A=E44002) (B=E43760)	CONTROL DEVICE (C=E43871) (D=E01001)	1	1	1	1	1	1		W
I	4	2	126650-66020	HANDLE, REGULATOR	1	1	1	1	1		
I	5	2	119888-66110	BRACKET	1	1	1	1	1		
I	6	2	119888-66130	PIVOT	1	1	1	1	1		
I	7	2	171048-67010	REGULATOR ASSY	1	1	1	1	1		
I	8	3	171102-66080	SPACER	1	1	1	1	1		
I	9	3	104200-66820	SPRING	1	1	1	1	1		
I	10	3	104200-66830	PLATE, FRICTION	2	2	2	2	2		
I	11	3	104200-66850	WASHER (B)	1	1	1	1	1		
I	12	3	104200-66860	NUT	1	1	1	1	1		
I	13	3	171085-67100	BRACKET, GEAR	1	1	1	1	1		
I	14	3	171085-67110	SHAFT, DRIVING	1	1	1	1	1		
I	15	3	171085-67120	GEAR	1	1	1	1	1		
I	16	3	171048-67130	LEVER	1	1	1	1	1		
I	17	3	171048-67140	STOPPER	1	1	1	1	1		
I	18	3	22351-020006	SPRING PIN 2X 6	1	1	1	1	1		
I	19	3	22411-200150	COTTER PIN 2.0X15	1	1	1	1	1		
I	20	3	26116-060082	BOLT 6X8	1	1	1	1	1		
I	21	3	26921-050122	SCREW M 5X 12	1	1	1	1	1		
I	22	2	170064-67210	LABEL, HANDLE	1	1	1	1	1		
I	23	2	22117-100000	WASHER 10	1	1	1	1	1		
I	24	2	22217-100000	SPRING WASHER 10	1	1	1	1	1		
I	25	2	22272-000050	CIRCLIP E- 5	1	1	1	1	1		
I	26	2	26106-060102	BOLT M 6X 10 PLATED	2	2	2	2	2		
I	27	2	26657-100002	CAP NUT M10	1	1	1	1	1		
I	27A	2	22137-100000	WASHER 10,POLISHED	1	1	1	1	1		W
		(A=E44002) (B=E43760)	(C=E43871) (D=E01001)	(E=E01005)							
		(A=E44002) (B=E43760)	(C=E43871) (D=E01001)	(E=E01005)							
28	1	26106-080162	BOLT M 8X 16 PLATED	2	2	2	2	2	2		

Fig.17. STARTING MOTOR



(A)=3TNE68-SA  
(B)=3TNE68-G1A  
(C)=3TNE68-G2A

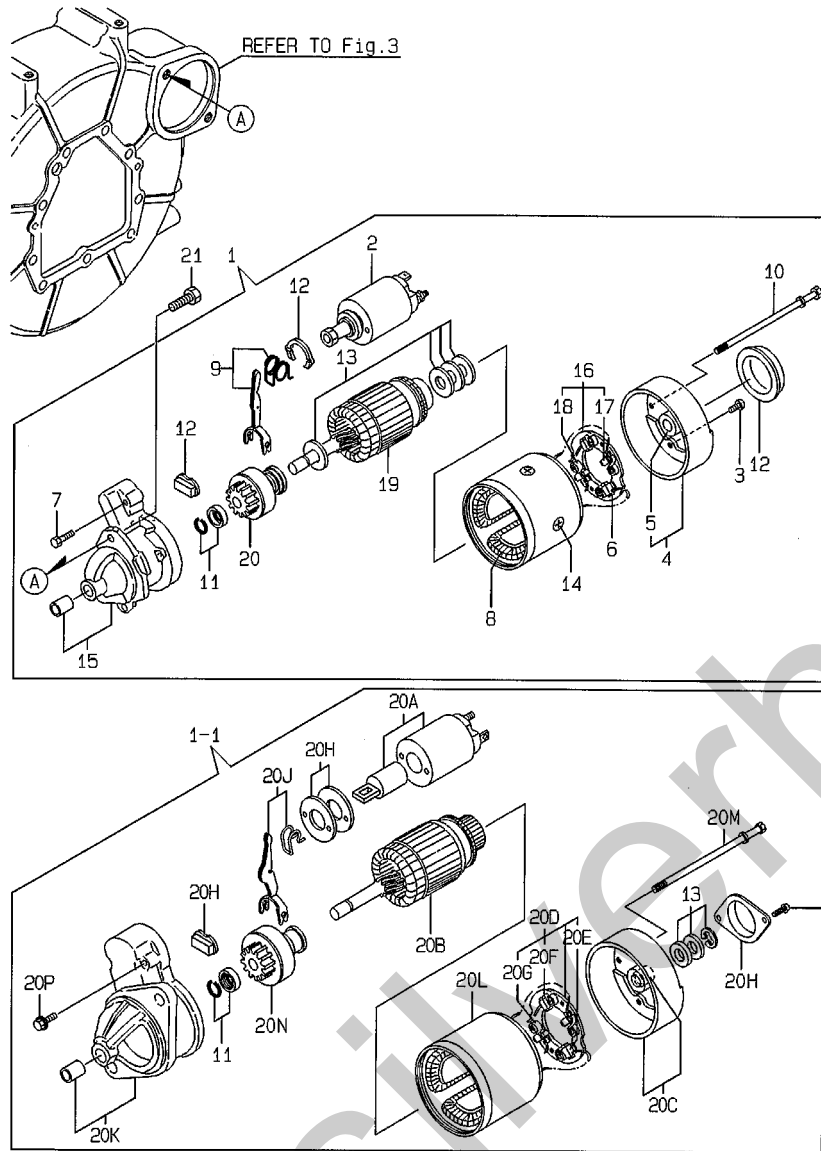
(D)=3TNE68C-SA  
(E)=3TNE68C-G1A  
(F)=

REF.	LEV.	PARTS NO.	DESCRIPTION	QTY						I	R
				(A)	(B)	(C)	(D)	(E)	(F)		
1	1	119631-77010	STARTER	1	1	1					
I	1-1	119631-77011	STARTING MOTOR	1	1	1	1	1			R
		(A=E15331) (B=E15351) (C=E23781)									
I	2	X2114275070	SWITCH, MAGNETIC	1	1	1					Z
		(A=E15331) (B=E15351) (C=E23781)									
I	3	X2114283500	SCREW SET	1	1	1					Z
		(A=E15331) (B=E15351) (C=E23781)									
I	4	X2114430010	COVER ASSY, REAR	1	1	1					Z
		(A=E15331) (B=E15351) (C=E23781)									
I	5	X2114535200	METAL, STARTER	1	1	1					Z
		(A=E15331) (B=E15351) (C=E23781)									
I	6	X2114531200	BRUSH (+)	2	2	2					Z
		(A=E15331) (B=E15351) (C=E23781)									
I	7	X2114586700	BOLT M6X 37	2	2	2					Z
		(A=E15331) (B=E15351) (C=E23781)									
I	8	X2114631090	COIL ASSY, FIELD	1	1	1					Z
		(A=E15331) (B=E15351) (C=E23781)									
I	9	X2114660130	LEVER KIT, SHIFT	1	1	1					Z
		(A=E15331) (B=E15351) (C=E23781)									
I	10	X2114680050	BOLT, THROUGH	2	2	2					Z
		(A=E15331) (B=E15351) (C=E23781)									
I	11	X2114715500	STOPPER SET, PINION	1	1	1	1	1			Z
		(A=E15331) (B=E15351) (C=E23781)									
I	12	X2114780060	COVER ASSY, DUST	1	1	1					Z
		(A=E15331) (B=E15351) (C=E23781)									
I	13	X2114811000	WASHER KIT, THRUST	1	1	1	1	1			Z
		(A=E15331) (B=E15351) (C=E23781)									
I	14	X2114821500	SCREW SET	1	1	1					Z
		(A=E15331) (B=E15351) (C=E23781)									
I	15	X2114966130	CASE ASSY, GEAR	1	1	1					Z
		(A=E15331) (B=E15351) (C=E23781)									
I	16	X2114990010	HOLDER ASSY, BRUSH	1	1	1					Z
		(A=E15331) (B=E15351) (C=E23781)									
I	17	X2114831300	BRUSH (-)	1	1	1					Z
		(A=E15331) (B=E15351) (C=E23781)									
I	18	X2114931400	SPRING, BRUSH	3	3	3					Z
		(A=E15331) (B=E15351) (C=E23781)									
I	19	124190-77110	ARMATURE, (NON-ASB.)	1	1	1					Z
		(A=E15331) (B=E15351) (C=E23781)									
I	20	124190-77760	PINION ASSY	1	1	1					Z
		(A=E15331) (B=E15351) (C=E23781)									
I	20A	X2114275010	SWITCH ASSY, MAGNET	1	1	1	1	1			W
		(A=E15331) (B=E15351) (C=E23781)									
I	20B	114371-77110	ARMATURE	1	1	1	1	1			W
		(A=E15331) (B=E15351) (C=E23781)									
I	20C	114371-77140	COVER ASSY, REAR	1	1	1	1	1			W
		(A=E15331) (B=E15351) (C=E23781)									
I	20D	114371-77160	HOLDER ASSY, BRUSH	1	1	1	1	1			W
		(A=E15331) (B=E15351) (C=E23781)									
I	20E	114371-79040	BRUSH (-)	2	2	2	2	2			W
		(A=E15331) (B=E15351) (C=E23781)									
I	20F	114371-79050	BRUSH (+)	1	1	1	1	1			W
		(A=E15331) (B=E15351) (C=E23781)									

Fig.17. STARTING MOTOR

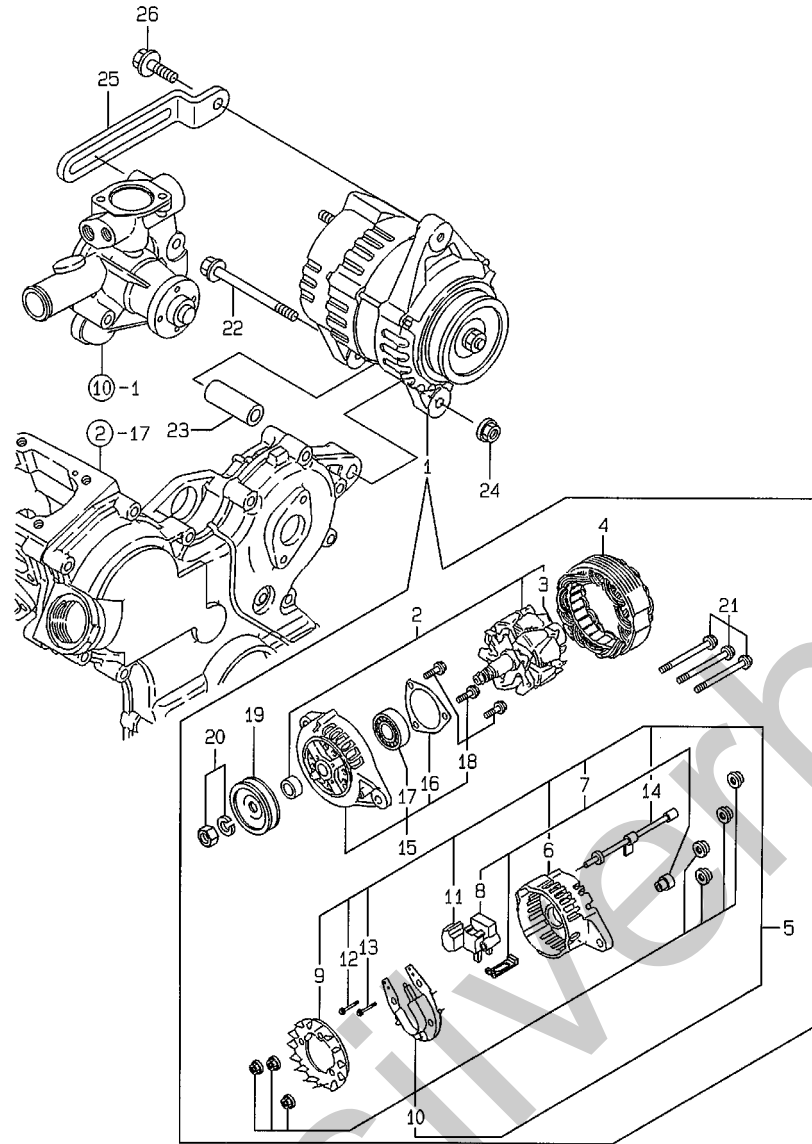
(A)=3TNE68-SA  
(B)=3TNE68-G1A  
(C)=3TNE68-G2A

(D)=3TNE68C-SA  
(E)=3TNE68C-G1A  
(F)=



REF.	LEV.	PARTS NO.	DESCRIPTION	QTY						I	R
				(A)	(B)	(C)	(D)	(E)	(F)		
I	20G	3	114371-79060 SPRING, BRUSH (A=E15331) (B=E15351) (C=E23781)	4	4	4	4	4		W	
I	20H	2	114371-77170 COVER KIT, DUST (A=E15331) (B=E15351) (C=E23781)	1	1	1	1	1		W	
I	20J	2	114371-77180 SHIFT LEVER KIT (A=E15331) (B=E15351) (C=E23781)	1	1	1	1	1		W	
I	20K	2	119631-77651 CASE, GEAR (A=E15331) (B=E15351) (C=E23781)	1	1	1	1	1		W	
I	20L	2	124097-77710 YOKE ASSY. (A=E15331) (B=E15351) (C=E23781)	1	1	1	1	1		W	
I	20M	2	124195-77770 BOLT, THROUGH (A=E15331) (B=E15351) (C=E23781)	2	2	2	2	2		W	
I	20N	2	119631-77780 PINION CMP (A=E15331) (B=E15351) (C=E23781)	1	1	1	1	1		W	
I	20P	2	114371-79070 BOLT M 6X 37 (A=E15331) (B=E15351) (C=E23781)	2	2	2	2	2		W	
	21	1	26116-120252 BOLT M12X 25 PLATED	2	2	2	2	2			

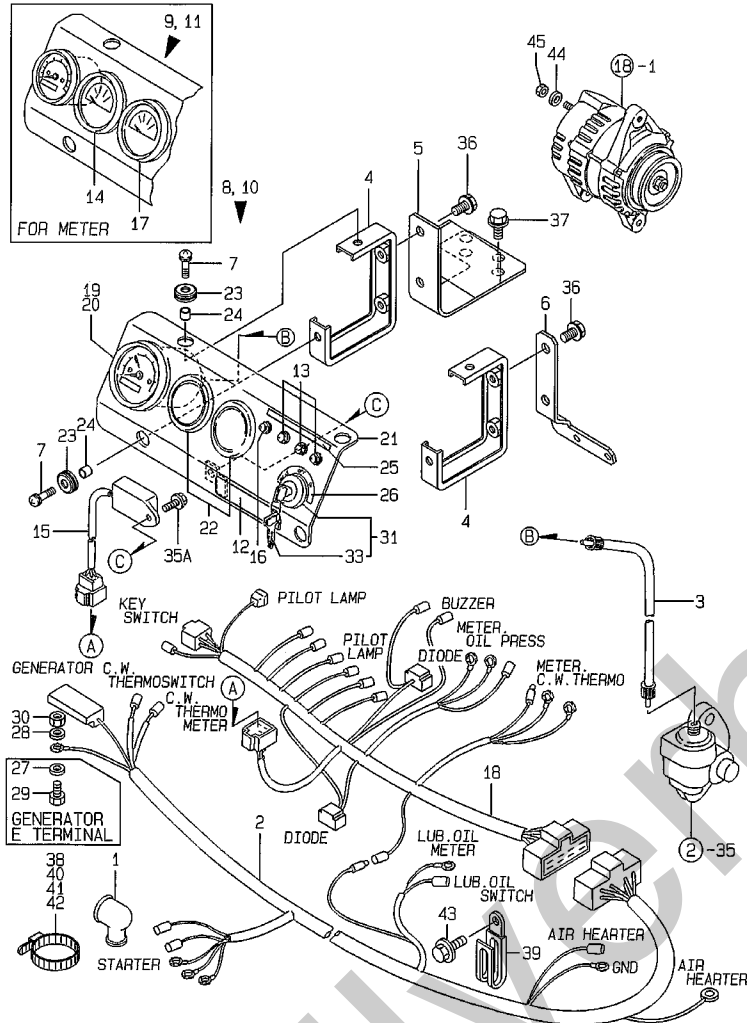
Fig.18. GENERATOR



(A)=3TNE68-SA  
 (B)=3TNE68-G1A  
 (C)=3TNE68-G2A  
 (D)=3TNE68C-SA  
 (E)=3TNE68C-G1A  
 (F)=

REF.	LEV.	PARTS NO.	DESCRIPTION	Q'TY						I	R
				(A)	(B)	(C)	(D)	(E)	(F)		
1	1	119836-77200	GENERATOR	1	1	1	1	1			
2	2	119836-77700	ROTOR ASSY	1	1	1	1	1			
3	3	119836-77850	BALL BEARING	1	1	1	1	1			
4	2	119836-77710	STATOR ASSY	1	1	1	1	1			
5	2	119836-77721	COVER ASSY, REAR	1	1	1	1	1			
6	3	119836-77730	COVER, REAR	1	1	1	1	1			
7	3	119836-77741	BRUSH ASSY,REGULATOR	1	1	1	1	1			
8	4	119836-77750	BRUSH ASSY	1	1	1	1	1			
9	3	119836-77760	GUIDE, FAN SIDE	1	1	1	1	1			
10	3	119836-77770	DIODE ASSY	1	1	1	1	1			
11	3	119836-77780	CONDENSER	1	1	1	1	1			
12	3	119836-77871	BOLT (1)	1	1	1	1	1			
13	3	119836-77880	BOLT (2)	1	1	1	1	1			
14	3	119836-77890	WIRE ASSY, LEAD	1	1	1	1	1			
15	2	119836-77790	COVER ASSY, FRONT	1	1	1	1	1			
16	3	119836-77800	RETAINER, BEARING	1	1	1	1	1			
17	3	119836-77840	BALL BEARING	1	1	1	1	1			
18	3	119836-77860	SCREW KID	1	1	1	1	1			
19	2	119836-77810	PULLEY	1	1	1	1	1			
20	2	119836-77820	NUT ASSY, PULLEY	1	1	1	1	1			
21	2	119836-77830	BOLT, THROUGH	1	1	1	1	1			
22	1	26106-081052	BOLT M 8X105 PLATED	1	1	1	1	1			
23	1	129150-77340	SPACER	1	1	1	1	1			
24	1	26366-080002	NUT M 8	1	1	1	1	1			
1	24-1	26306-080002	NUT	1	1	1	1	1		N	
		(A=E-XXX) (B=E-XXX) (C=E-XXX) (D=E-XXX) (E=E-XXX)									
25	1	119225-77330	ADJUSTER, BELT	1	1	1	1	1			
26	1	26106-080182	BOLT M 8X 18 PLATED	1	1	1	1	1			

Fig.19. PANEL



Remarks  
 (1) WITH C.W.THERMOMETER(REF.NO.14,  
 P/# 171010-77850) & PRESSURE  
 GAUGE(REF.NO.17,P/# 171090-91010).

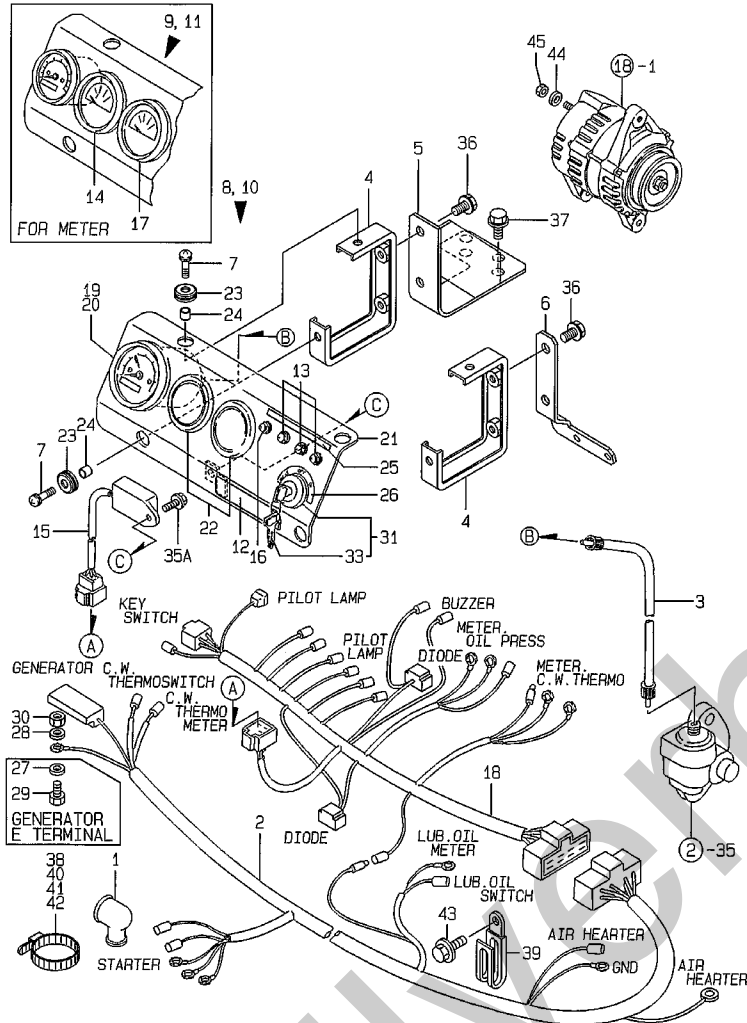
(A)=3TNE68-SA  
 (B)=3TNE68-G1A  
 (C)=3TNE68-G2A  
 (D)=3TNE68C-SA  
 (E)=3TNE68C-G1A  
 (F)=

REF.	LEV.	PARTS NO.	DESCRIPTION	(A)	(B)	(C)	(D)	(E)	(F)	I	R
1	1	124550-77030	COVER, TERMINAL	1	1	1	1	1			
2	1	119888-91021	HARNESS (A), WIRE	1	1	1					
I 2-1	1	119888-91022	HARNESS(A), WIRE	1	1	1	1	1			N
		(A=E12794) (B=E13313) (C=E23781)									
3	1	124701-91140	CABLE L= 985	1	1	1	1	1			
4	1	119888-91120	SUPPORT, PANEL	2	2	2	2	2			
5	1	119288-91130	BRACKET	1	1	1	1	1			
6	1	119288-91140	SUPPORT	1	1	1	1	1			
7	1	26033-060202	SCREW M 6X 20	4	4	4	4	4			
8	1	119888-91101	PANEL ASSY, INSTRUM	1		1	1				
9	1	119888-91201	PANEL ASSY, INSTRUM	1		1	1				1
10	1	119888-91301	PANEL ASSY, INSTRUM		1			1			
11	1	119888-91311	PANEL ASSY, INSTRUM		1			1			1
12	2	104507-07190	LABEL, YANMAR	1	1	1	1	1			
13	2	124732-77720	LAMP, CHARGING	3	3	3	3	3			
14	2	171010-77850	THERMOMETER, C.W.	1	1	1	1	1			1
15	2	128300-77920	TIMER	1	1	1	1	1			
16	2	124559-77971	LAMP, PILOT	1	1	1	1	1			
17	2	171090-91010	GAUGE, PRESSURE	1	1	1	1	1			1
18	2	119888-91031	HARNESS (B), WIRE	1	1	1	1	1			
19	2	171080-91100	TACHOMETER	1		1	1				
20	2	171082-91100	TACHOMETER		1			1			
21	2	119888-91110	BODY	1	1	1	1	1			
22	2	124770-91220	COVER 52	2	2	2	2	2			
23	2	121400-91520	ABSORBER	4	4	4	4	4			
24	2	121400-91530	SPACER	4	4	4	4	4			
25	2	119888-91610	LABEL, CW & OIL LAMP	1	1	1	1	1			
26	2	119888-91620	LABEL, KEY SWITCH	1	1	1	1	1			
I 27	2	22117-050000	WASHER 5	1		1					Z
		(A=EXXX) (C=EXXX)									
I 28	2	22117-050000	WASHER 5	1		1					Z
		(A=EXXX) (C=EXXX)									
I 29	2	26116-050102	BOLT M 5X 10 PLATED	1		1					Z
		(A=EXXX) (C=EXXX)									
I 30	2	26716-050002	NUT M 5	1		1					Z
		(A=EXXX) (C=EXXX)									
31	2	933110-00100	SWITCH ASSY, STARTER	1	1	1	1	1			
33	3	933110-00301	KEY ASSY	1	1	1	1	1			
I 35A	2	26106-060102	BOLT M 6X 10 PLATED	1	1	1	1	1			W
		(A=EXXX) (B=EXXX) (C=EXXX)									
36	1	26106-080122	BOLT M 8X 12 PLATED	4	4	4	4	4			
37	1	26106-100502	BOLT M10X 50 PLATED	2	2	2	2	2			
38	1	121750-59890	CLAMP 140	1	1	1	1	1			
39	1	194180-51640	CLAMP, WIRE HARNESS	1	1	1	1	1			
40	1	121750-59890	CLAMP 140	1	1		1	1			
41	1	121750-59890	CLAMP 140				1				
42	1	121750-59890	CLAMP 140	1	1		1	1			
I 43	1	26106-100122	BOLT M10X 12 PLATED	1	1	1	1	1			W
		(A=EXXX) (B=EXXX) (C=EXXX) (D=EXXX) (E=EXXX)									
I 44	1	22117-050000	WASHER 5	1	1	1	1	1			W
		(A=EXXX) (B=EXXX) (C=EXXX) (D=EXXX) (E=EXXX)									



Fig.19. PANEL

(A)=3TNE68-SA (D)=3TNE68C-SA  
 (B)=3TNE68-G1A (E)=3TNE68C-G1A  
 (C)=3TNE68-G2A (F)=



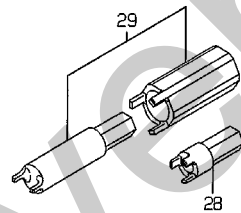
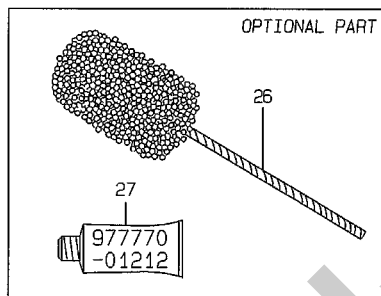
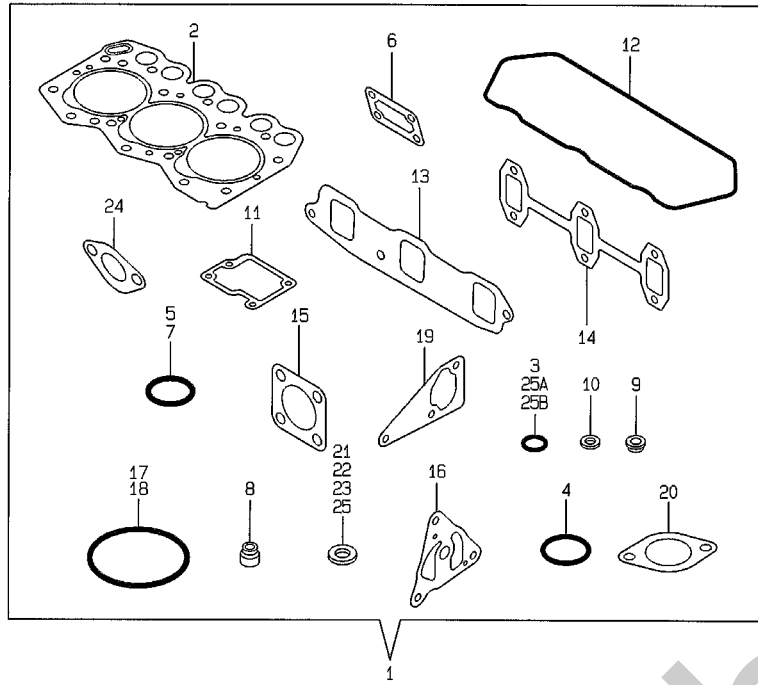
REF.	LEV.	PARTS NO.	DESCRIPTION	Q'TY						I	R
				(A)	(B)	(C)	(D)	(E)	(F)		
I	45	1	26716-050002 NUT M 5 (A=EXXX) (B=EXXX) (C=EXXX) (D=EXXX)	1	1	1	1	1	1	W	

Remarks  
 (1) WITH C.W.THERMOMETER(REF.NO.14,  
 P/# 171010-77850) & PRESSURE  
 GAUGE(REF.NO.17,P/# 171090-91010).

Fig.20. GASKET SET

(A)=3TNE68-SA  
(B)=3TNE68-G1A  
(C)=3TNE68-G2A

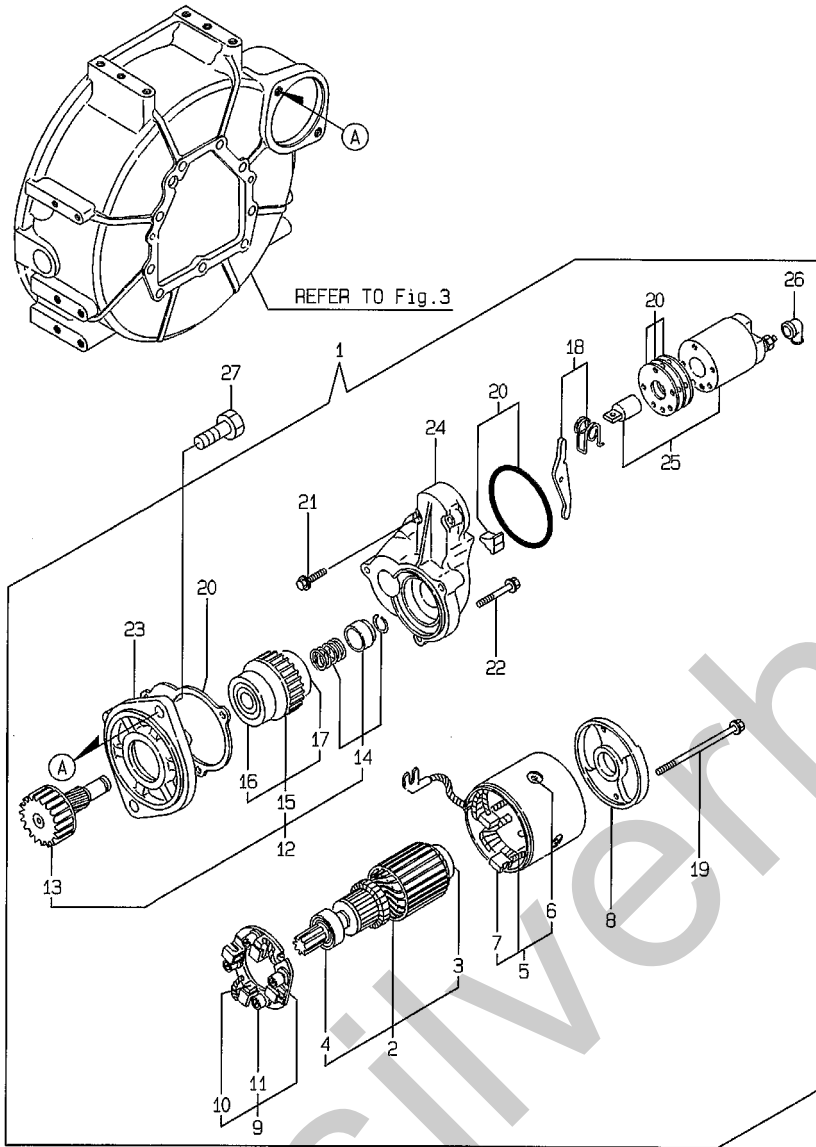
(D)=3TNE68C-SA  
(E)=3TNE68C-G1A  
(F)=



REF.	LEV.	PARTS NO.	DESCRIPTION	Q'TY						I	R
				(A)	(B)	(C)	(D)	(E)	(F)		
1	1	719265-92611	GASKET SET	1	1	1					1
I	1-1	1 719265-92612	GASKET SET	1	1	1	1	1			N
		(A=E21604) (B=E28743) (C=E23781)	(D=E00493) (E=E00492)								
2	2	119265-01340	GASKET, CYL. HEAD	1	1	1	1	1			
I	2-1	2 119265-01341	GASKET, CYL. HEAD	1	1	1	1	1			N
		(A=E21604) (B=E28743) (C=E23781) (D=E00493) (E=E00492)									
3	2	24311-000120	O-RING 1A P 12.0	5	5	5					
I	3-1	2 24311-000120	O-RING 1A P 12.0	2	2	2	2	2			K
		(A=E21604) (B=E28743) (C=E23781)									
4	2	24311-000320	O-RING 1A P-32.0	2	2	2	2	2			
5	2	24341-000240	O-RING 1A S-24.0	1	1	1	1	1			
6	2	119660-01562	GASKET, (NON-ASB.)	1	1	1	1	1			
7	2	24311-000180	O-RING 1A P-18.0	1	1	1	1	1			
8	2	119260-11340	SEAL, VALVE STEM	6	6	6	6	6			
9	2	119600-11450	PROTECTOR, NOZZLE	3	3	3	3	3			
10	2	119600-11460	GASKET, NOZZLE	6	6	6	6	6			
11	2	119260-03031	GASKET, (NON-ASB.)	1	1	1	1	1			
12	2	119260-11310	GASKET, BONNET	1	1	1	1	1			
13	2	119270-12110	GASKET, SUC.MANIFOLD	1	1	1	1	1			
14	2	119260-13110	GASKET, EXH.MANIFOLD	1	1	1	1	1			
15	2	121000-13201	GASKET, SILENCER	2	2	2	2	2			
16	2	119660-32020	GASKET, L.O.PUMP	1	1	1	1	1			
17	2	24321-000600	O-RING 1A G-60.0	1	1	1	1	1			
18	2	24321-000700	O-RING 1A G70.0,NBR	1	1	1	1	1			
19	2	119260-42020	GASKET, C.W. PUMP	1	1	1	1	1			
20	2	129350-49541	GASKET, (NON-ASB.)	1	1	1	1	1			
21	2	124465-44950	GASKET 16	2	2	2	2	2			
22	2	22190-080002	SEAL WASHER 8S	4	4	4	4	4			
23	2	23414-140000	GASKET 14, ROUND	3	3	3	3	3			
24	2	121520-01851	GASKET, (NON-ASB.)	1	1	1	1	1			
25	2	104200-59170	GASKET 12	2	2	2	2	2			
I	25A	2 119624-32040	O-RING P 12.0	2	2	2	2	2			W
		(A=E62542) (B=E62973) (C=E62473) (D=E01001) (E=E01088)									
I	25B	2 24311-000110	O-RING 1A P-11.0	1	1	1	1	1			W
		(A=E21604) (B=E28743) (C=E23781)									
I	25B-1	2 119209-35030	O-RING	1	1	1	1	1			R
		(A=E31086) (B=E33561) (C=E31085) (D=E00605) (E=E00590)									
26	1	129400-92400	FLEX HORN	1	1	1	1	1			1
27	1	977770-01212	GASKET, LIQUID	1	1	1	1	1			1
I	28	1 119621-99100	TOOL,CARB HIGH IDLE						1	1	
I	29	1 119621-99400	TOOL ASSY,CARB FUEL						1	1	

Remarks  
(1) OPTIONAL PART.

Fig.21. STARTING MOTOR(COLD DISTRICT)



(A)=3TNE68-SA  
(B)=3TNE68-G1A01  
(C)=3TNE68-G2A01

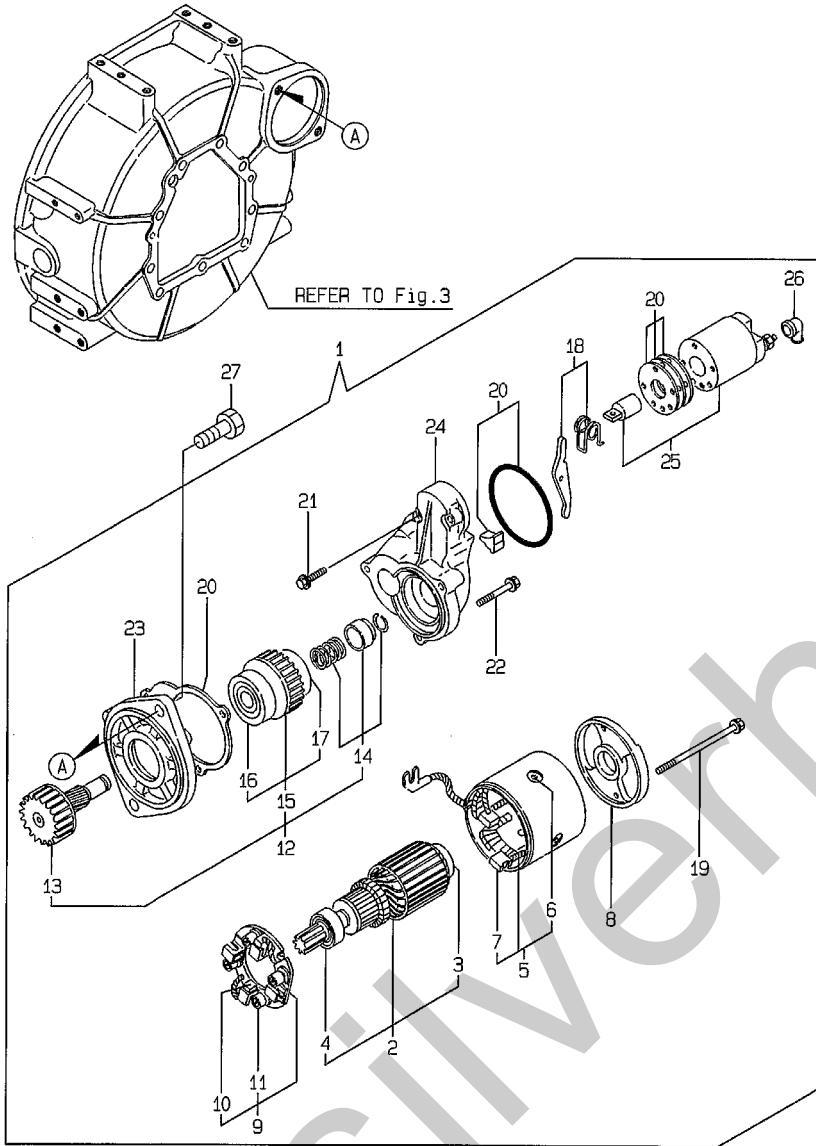
(D)=3TNE68C(E)SA  
(E)=3TNE68C(E)G1  
(F)=

REF.	LEV.	PARTS NO.	DESCRIPTION	Q'TY						I	R
				(A)	(B)	(C)	(D)	(E)	(F)		
I	1	1 119256-77010 (A=E15331) (B=E15351) (C=E23781)	MOTOR ASSY, STARTING	1	1	1	1	1		W	
I	2	2 X211461005 (A=E15331) (B=E15351) (C=E23781)	ARMATURE	1	1	1	1	1		W	
I	3	3 X2130350900 (A=E15331) (B=E15351) (C=E23781)	BALL BEARING	1	1	1	1	1		W	
I	4	3 X211425511 (A=E15331) (B=E15351) (C=E23781)	BALL BEARING	1	1	1	1	1		W	
I	5	2 X211442003 (A=E15331) (B=E15351) (C=E23781)	COIL ASSY, FIELD	1	1	1	1	1		W	
I	6	3 X21143215 (A=E15331) (B=E15351) (C=E23781)	SCREW, CORE	4	4	4	4	4		W	
I	7	3 X211469002 (A=E15331) (B=E15351) (C=E23781)	BRUSH (+)	2	2	2	2	2		W	
I	8	2 X211483003 (A=E15331) (B=E15351) (C=E23781)	COVER, REAR	1	1	1	1	1		W	
I	9	2 X211439001 (A=E15331) (B=E15351) (C=E23781)	HOLDER ASSY, BRUSH	1	1	1	1	1		W	
I	10	3 X211459002 (A=E15331) (B=E15351) (C=E23781)	BRUSH (-)	2	2	2	2	2		W	
I	11	3 X21147314 (A=E15331) (B=E15351) (C=E23781)	SPRING, BRUSH	4	4	4	4	4		W	
I	12	2 X211465505 (A=E15331) (B=E15351) (C=E23781)	CLUTCH ASSY, PINION	1	1	1	1	1		W	
I	13	3 X211465504 (A=E15331) (B=E15351) (C=E23781)	SHAFT, PINION	1	1	1	1	1		W	
I	14	3 X211429006 (A=E15331) (B=E15351) (C=E23781)	STOPPER SET	1	1	1	1	1		W	
I	15	3 X211455500 (A=E15331) (B=E15351) (C=E23781)	CLUTCH ASSY	1	1	1	1	1		W	
I	16	4 X211495502 (A=E15331) (B=E15351) (C=E23781)	BALL BEARING	1	1	1	1	1		W	
I	17	4 X224041010 (A=E15331) (B=E15351) (C=E23781)	BALL BEARING	1	1	1	1	1		W	
I	18	2 X211476012 (A=E15331) (B=E15351) (C=E23781)	LEVER	1	1	1	1	1		W	
I	19	2 X211468005 (A=E15331) (B=E15351) (C=E23781)	BOLT, THROUGH	2	2	2	2	2		W	
I	20	2 171008-77571 (A=E15331) (B=E15351) (C=E23781)	DUST COVER,(NON-ASB.	1	1	1	1	1		W	
I	21	2 X21145866 (A=E15331) (B=E15351) (C=E23781)	BOLT	2	2	2	2	2		W	
I	22	2 X21142867 (A=E15331) (B=E15351) (C=E23781)	BOLT	3	3	3	3	3		W	
I	23	2 X2114765040 (A=E15331) (B=E15351) (C=E23781)	HOUSING ASSY, GEAR	1	1	1	1	1		W	
I	24	2 X2114145010 (A=E15331) (B=E15351) (C=E23781)	CENTER HOUSING	1	1	1	1	1		W	
I	25	2 171008-77531 (A=E15331) (B=E15351) (C=E23781)	MAGNETIC SWITCH ASSY	1	1	1	1	1		W	
I	26	2 X21142742	COVER (A), RUBBER	1	1	1	1	1		W	

Fig.21. STARTING MOTOR(COLD DISTRICT)

(A)=3TNE68-SA  
(B)=3TNE68-G1A01  
(C)=3TNE68-G2A01

(D)=3TNE68C(E)SA  
(E)=3TNE68C(E)G1  
(F)=



REF.	LEV.	PARTS NO.	DESCRIPTION	Q'TY						I	R	
				(A)	(B)	(C)	(D)	(E)	(F)			
		(A=E15331)	(B=E15351)	(C=E23781)								
I	27	1	26116-120252	BOLT M12X 25 PLATED	2	2	2	2	2			W
		(A=E15331)	(B=E15351)	(C=E23781)								